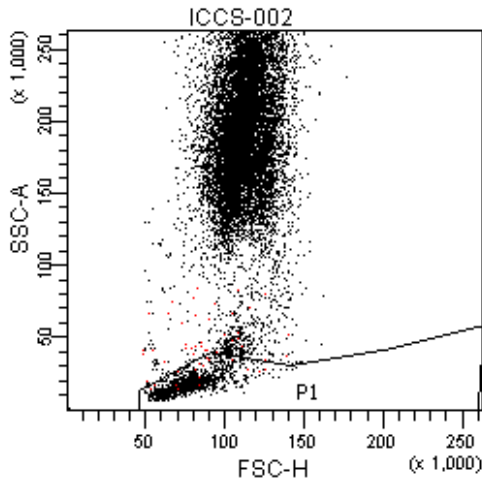


# Emory University Hospital Flow Cytometry

DIVA 1

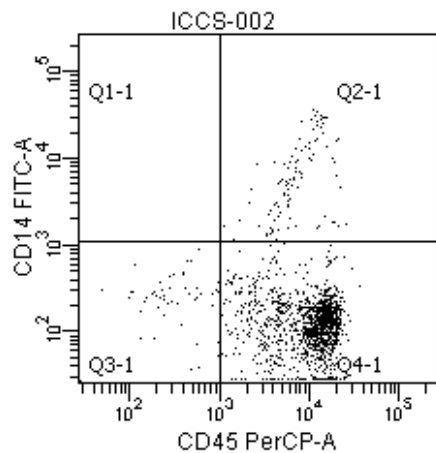
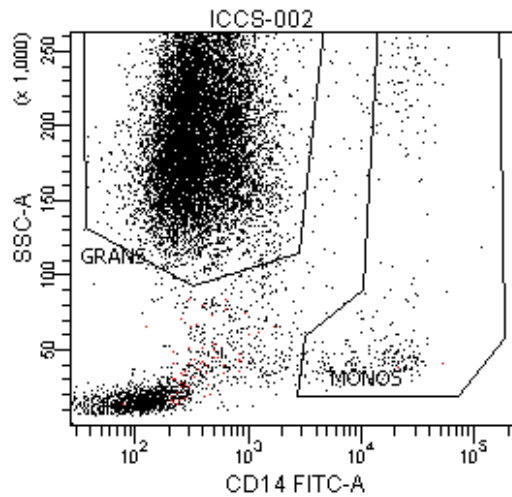
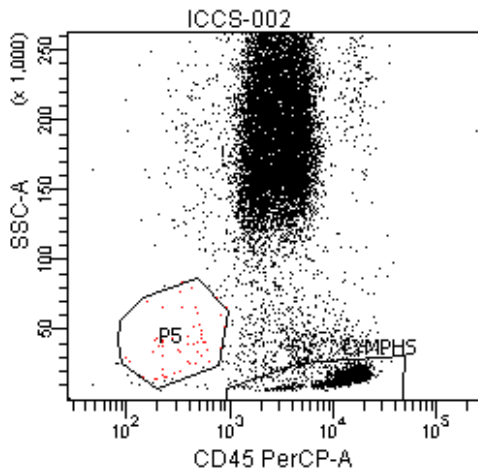
**Specimen Name:** ICCS  
**Tube Name:** 002  
**Record Date:** Jun 20, 2011 1:57:56 PM  
**CASE NUMBER:**

**Population**



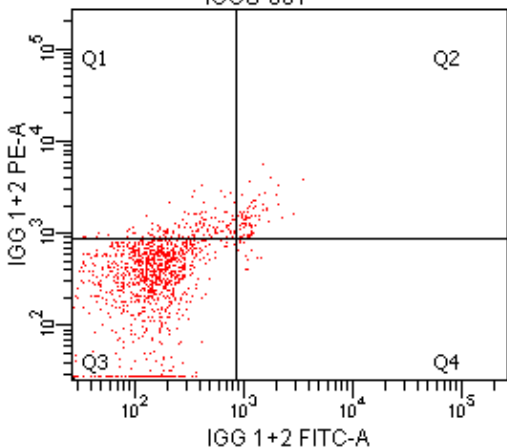
**Tube Name:** 002  
**Record Date:** Jun 20, 2011 1:57:56 PM  
**SAMPLE ID:** BMA  
**CASE NUMBER:**

Population	#Events	%Total
All Events	15,000	100
P1	1,429	10
MONOS	461	3
GRANS	12,721	85
LYMPHS	1,215	8
P5	57	0



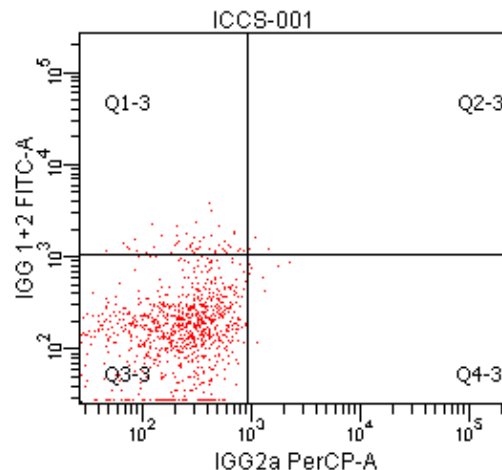
**Tube Name:** 002  
**Record Date:** Jun 20, 2011 1:57:56 PM  
**SAMPLE ID:** BMA  
**CASE NUMBER:**

Population	#Events	%Parent	%Total
All Events	15,000	###	100
Q1-1	10	0	0
Q2-1	1,341	9	9
Q3-1	303	2	2
Q4-1	13,346	89	89
P5	57	0	0



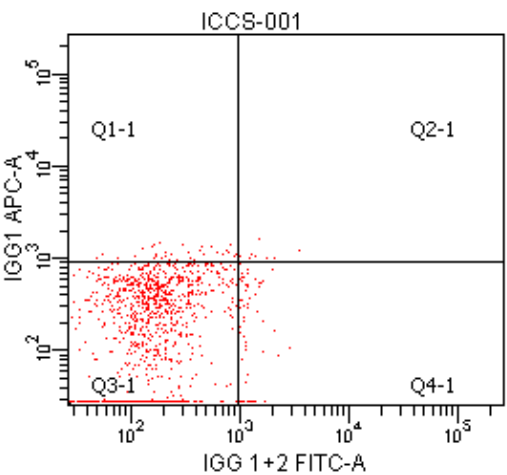
Tube Name: 001  
 Record Date: Jun 20, 2011 1:...

Population	#Ev...	%Par...	%To...
All Events	15,000	###	100.0
P1	1,340	8.9	8.9
Q1	113	8.4	0.8
Q2	73	5.4	0.5
Q3	1,134	84.6	7.6
Q4	20	1.5	0.1



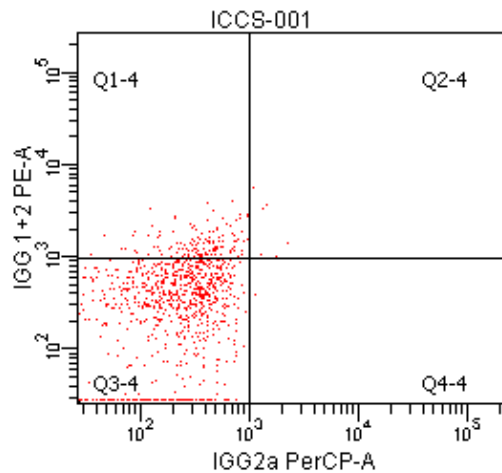
Tube Name: 001  
 CASE NUMBER:

Population	#Ev...	%Par...	%Total
All Events	15,000	###	100.0
P1	1,340	8.9	8.9
Q1-3	55	4.1	0.4
Q2-3	3	0.2	0.0
Q3-3	1,272	94.9	8.5
Q4-3	10	0.7	0.1



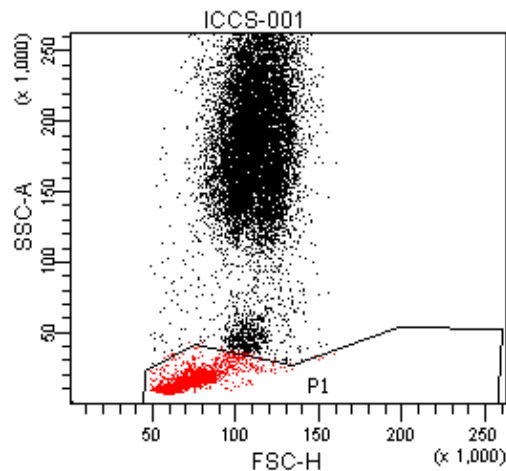
Tube Name: 001  
 CASE NUMBER:

Population	#Ev...	%Par...	%Total
All Events	15,000	###	100.0
P1	1,340	8.9	8.9
Q1-1	33	2.5	0.2
Q2-1	10	0.7	0.1
Q3-1	1,231	91.9	8.2
Q4-1	66	4.9	0.4



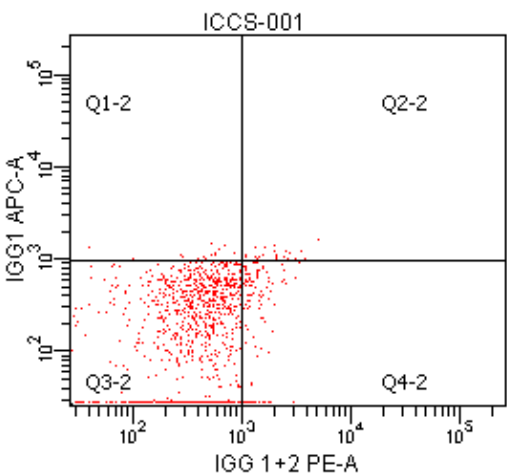
Tube Name: 001  
 CASE NUMBER:

Population	#Ev...	%Par...	%Total
All Events	15,000	###	100.0
P1	1,340	8.9	8.9
Q1-4	144	10.7	1.0
Q2-4	8	0.6	0.1
Q3-4	1,187	88.6	7.9
Q4-4	1	0.1	0.0



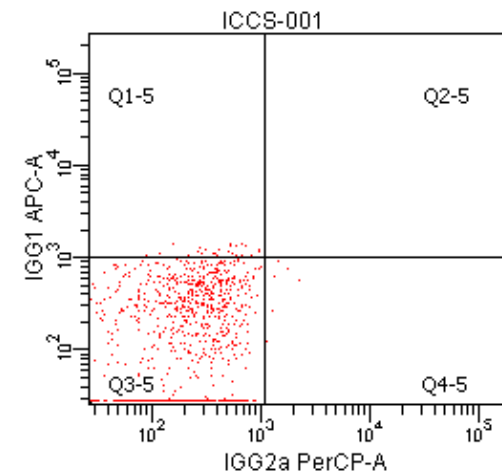
Tube Name: 001  
 Record Date: Jun 20, 2011...  
 CASE NUMBER:  
 SAMPLE ID: BMA  
 PATIENT ID:

Population	#Ev...	%Pa...	%To...
All Events	15,000	###	100.0
P1	1,340	8.9	8.9



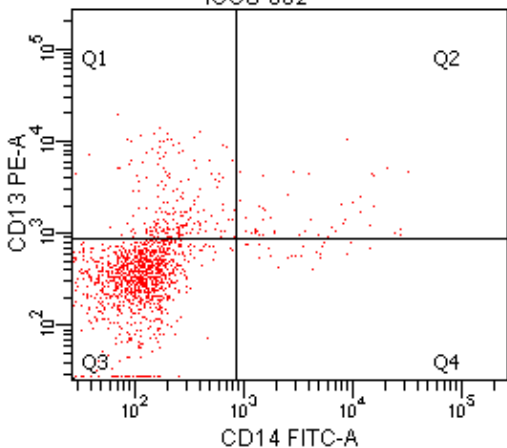
Tube Name: 001  
 CASE NUMBER:

Population	#Ev...	%Par...	%Total
All Events	15,000	###	100.0
P1	1,340	8.9	8.9
Q1-2	13	1.0	0.1
Q2-2	20	1.5	0.1
Q3-2	1,187	88.6	7.9
Q4-2	120	9.0	0.8



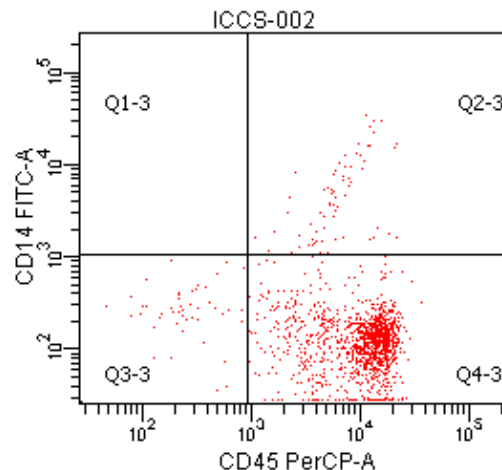
Tube Name: 001  
 CASE NUMBER:

Population	#Ev...	%Par...	%Total
All Events	15,000	###	100.0
P1	1,340	8.9	8.9
Q1-5	23	1.7	0.2
Q2-5	1	0.1	0.0
Q3-5	1,310	97.8	8.7
Q4-5	6	0.4	0.0



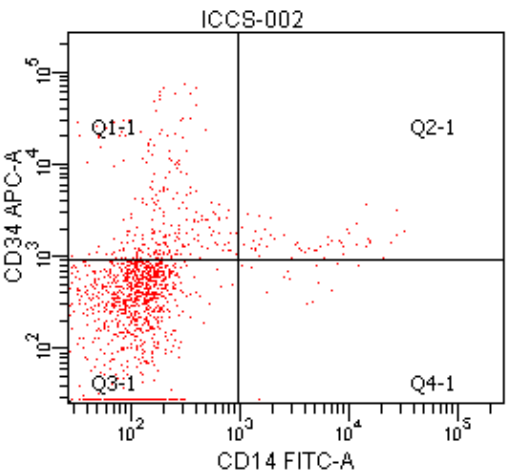
Tube Name: 002  
 Record Date: Jun 20, 2011 1:...

Population	#Ev...	%Par...	%To...
All Events	15,000	###	100.0
P1	1,390	9.3	9.3
Q1	181	13.0	1.2
Q2	47	3.4	0.3
Q3	1,138	81.9	7.6
Q4	24	1.7	0.2



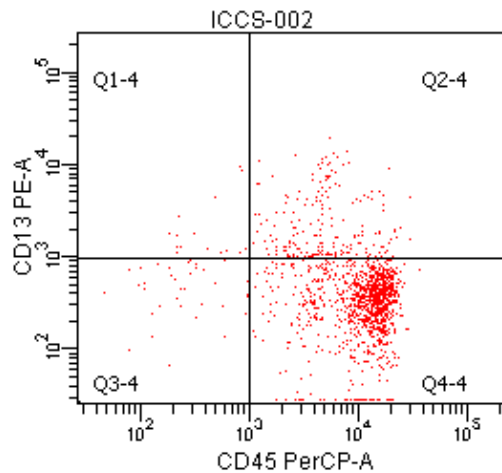
Tube Name: 002  
 CASE NUMBER:

Population	#Ev...	%Par...	%Total
All Events	15,000	###	100.0
P1	1,390	9.3	9.3
Q1-3	0	0.0	0.0
Q2-3	65	4.7	0.4
Q3-3	47	3.4	0.3
Q4-3	1,278	91.9	8.5



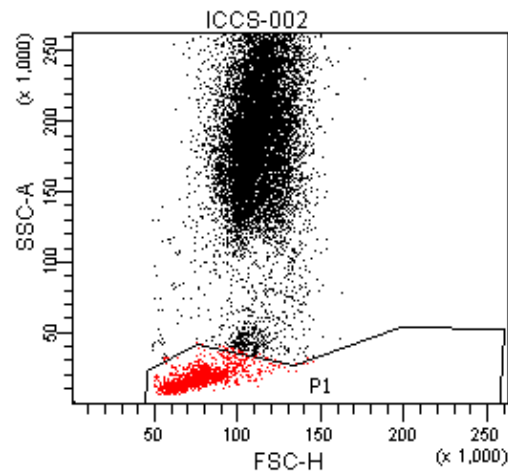
Tube Name: 002  
 CASE NUMBER:

Population	#Ev...	%Par...	%Total
All Events	15,000	###	100.0
P1	1,390	9.3	9.3
Q1-1	232	16.7	1.5
Q2-1	50	3.6	0.3
Q3-1	1,091	78.5	7.3
Q4-1	17	1.2	0.1



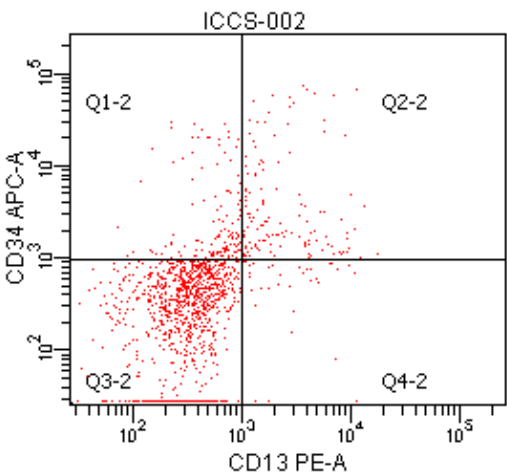
Tube Name: 002  
 CASE NUMBER:

Population	#Ev...	%Par...	%Total
All Events	15,000	###	100.0
P1	1,390	9.3	9.3
Q1-4	15	1.1	0.1
Q2-4	183	13.2	1.2
Q3-4	36	2.6	0.2
Q4-4	1,156	83.2	7.7



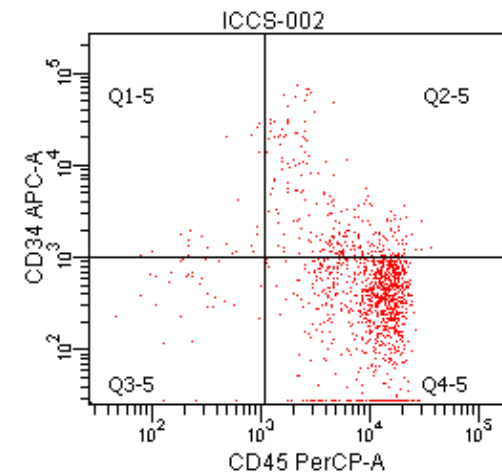
Tube Name: 002  
 Record Date: Jun 20, 2011...  
 CASE NUMBER:  
 SAMPLE ID: BMA  
 PATIENT ID:

Population	#Ev...	%Pa...	%To...
All Events	15,000	###	100.0
P1	1,390	9.3	9.3



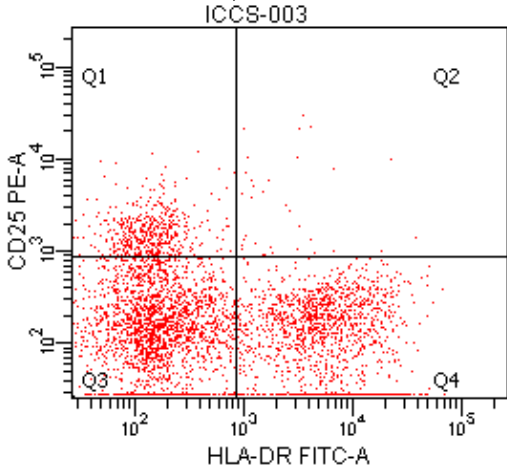
Tube Name: 002  
 CASE NUMBER:

Population	#Ev...	%Par...	%Total
All Events	15,000	###	100.0
P1	1,390	9.3	9.3
Q1-2	121	8.7	0.8
Q2-2	148	10.6	1.0
Q3-2	1,076	77.4	7.2
Q4-2	45	3.2	0.3



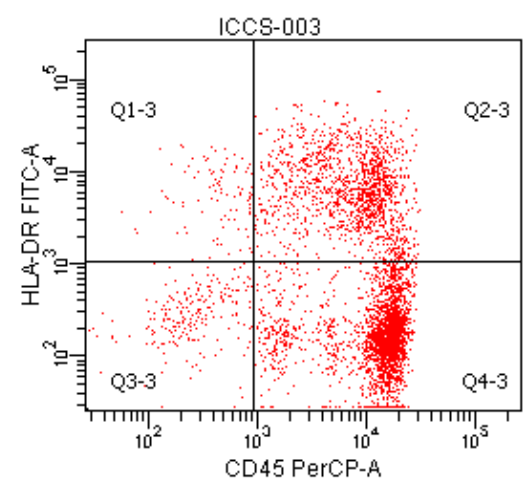
Tube Name: 002  
 CASE NUMBER:

Population	#Ev...	%Par...	%Total
All Events	15,000	###	100.0
P1	1,390	9.3	9.3
Q1-5	23	1.7	0.2
Q2-5	235	16.9	1.6
Q3-5	31	2.2	0.2
Q4-5	1,101	79.2	7.3



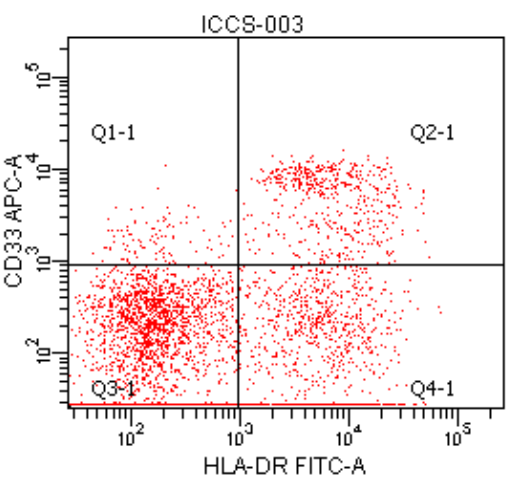
Tube Name: 003  
Record Date: Jun 20, 2011 1:...

Population	#Events	%Par...	%To...
All Events	10,000	###	100.0
P1	4,196	42.0	42.0
Q1	484	11.5	4.8
Q2	33	0.8	0.3
Q3	2,162	51.5	21.6
Q4	1,517	36.2	15.2



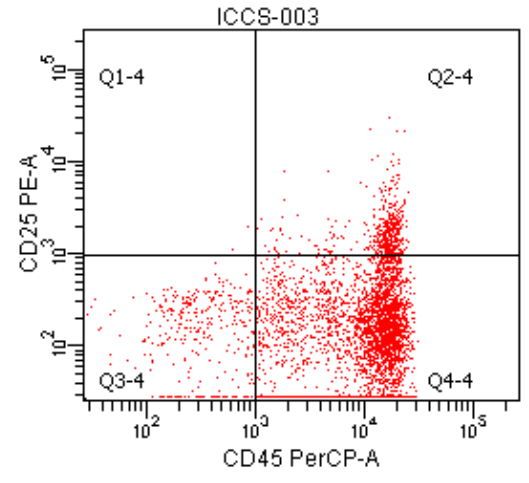
Tube Name: 003  
CASE NUMBER:

Population	#Events	%Par...	%Total
All Events	10,000	###	100.0
P1	4,196	42.0	42.0
Q1-3	93	2.2	0.9
Q2-3	1,389	33.1	13.9
Q3-3	223	5.3	2.2
Q4-3	2,491	59.4	24.9



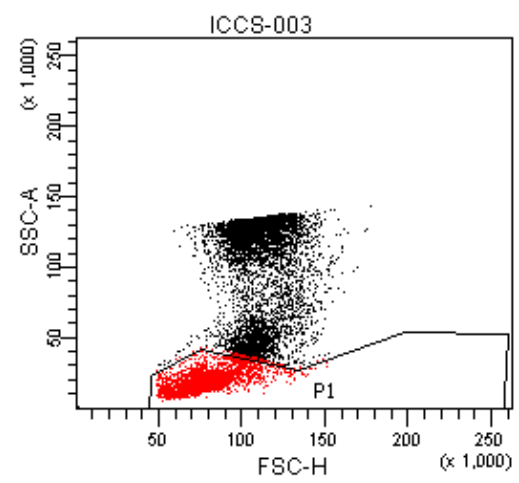
Tube Name: 003  
CASE NUMBER:

Population	#Events	%Par...	%Total
All Events	10,000	###	100.0
P1	4,196	42.0	42.0
Q1-1	106	2.5	1.1
Q2-1	507	12.1	5.1
Q3-1	2,578	61.4	25.8
Q4-1	1,005	24.0	10.0



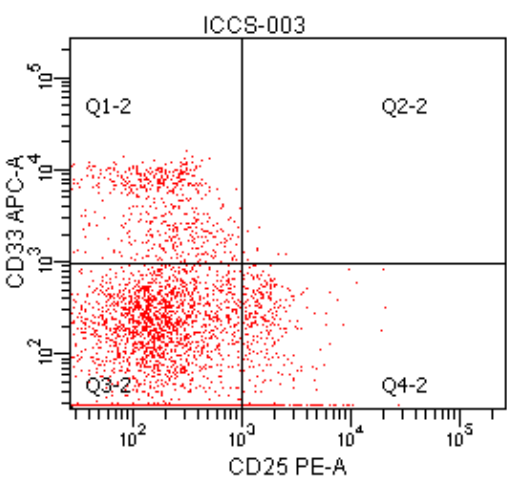
Tube Name: 003  
CASE NUMBER:

Population	#Events	%Par...	%Total
All Events	10,000	###	100.0
P1	4,196	42.0	42.0
Q1-4	2	0.0	0.0
Q2-4	459	10.9	4.6
Q3-4	328	7.8	3.3
Q4-4	3,407	81.2	34.1



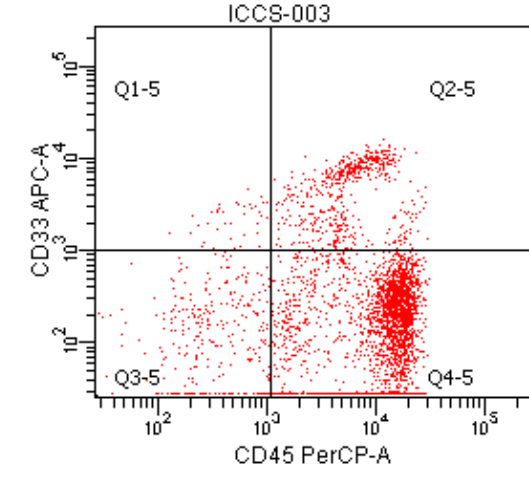
Tube Name: 003  
Record Date: Jun 20, 2011...  
CASE NUMBER:  
SAMPLE ID: BMA  
PATIENT ID:

Population	#Events	%Pa...	%To...
All Events	10,000	###	100.0
P1	4,196	42.0	42.0



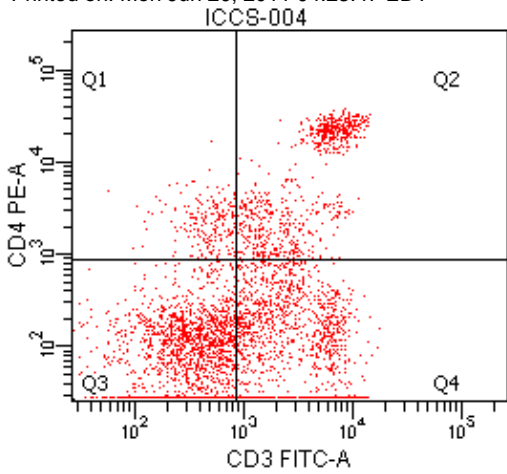
Tube Name: 003  
CASE NUMBER:

Population	#Events	%Par...	%Total
All Events	10,000	###	100.0
P1	4,196	42.0	42.0
Q1-2	597	14.2	6.0
Q2-2	10	0.2	0.1
Q3-2	3,147	75.0	31.5
Q4-2	442	10.5	4.4



Tube Name: 003  
CASE NUMBER:

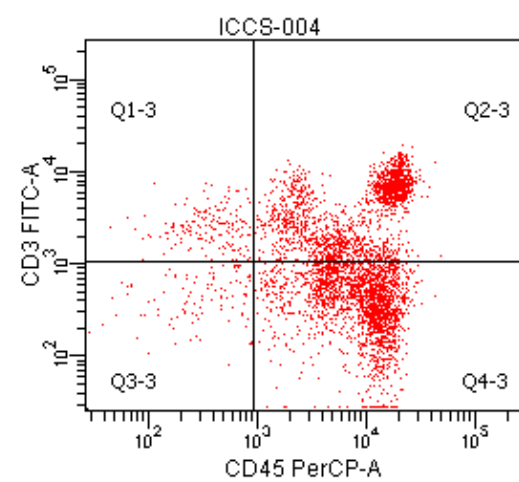
Population	#Events	%Par...	%Total
All Events	10,000	###	100.0
P1	4,196	42.0	42.0
Q1-5	37	0.9	0.4
Q2-5	558	13.3	5.6
Q3-5	309	7.4	3.1
Q4-5	3,292	78.5	32.9



Tube Name: 004  
 Record Date: Jun 20, 2011 1:...

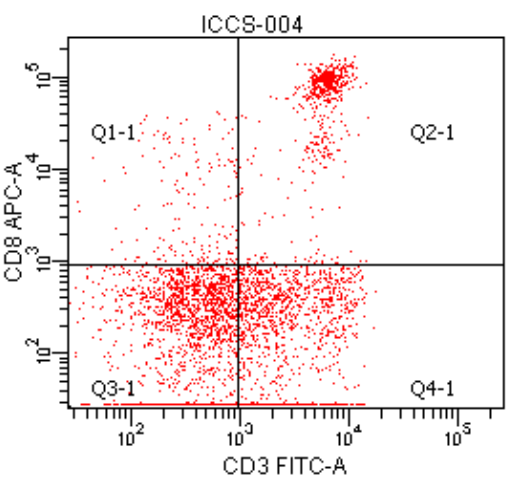
CASE NUMBER:

Population	#Events	%Par...	%To...
All Events	10,000	###	100.0
P1	4,212	42.1	42.1
Q1	206	4.9	2.1
Q2	726	17.2	7.3
Q3	1,911	45.4	19.1
Q4	1,369	32.5	13.7



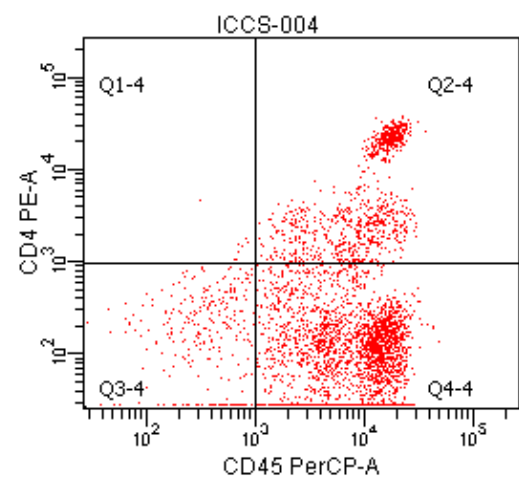
Tube Name: 004  
 CASE NUMBER:

Population	#Ev...	%Par...	%Total
All Events	10,000	###	100.0
P1	4,212	42.1	42.1
Q1-3	163	3.9	1.6
Q2-3	1,702	40.4	17.0
Q3-3	118	2.8	1.2
Q4-3	2,229	52.9	22.3



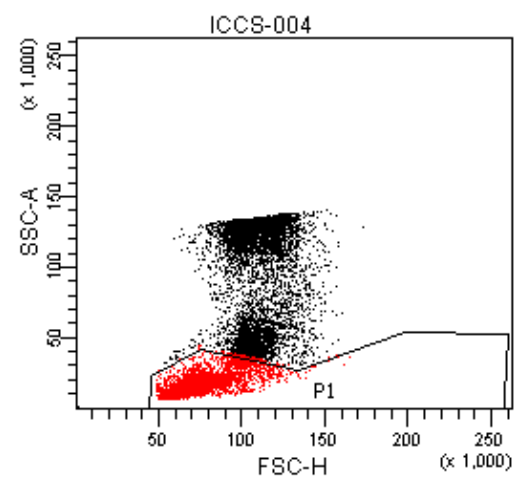
Tube Name: 004  
 CASE NUMBER:

Population	#Ev...	%Par...	%Total
All Events	10,000	###	100.0
P1	4,212	42.1	42.1
Q1-1	170	4.0	1.7
Q2-1	563	13.4	5.6
Q3-1	2,064	49.0	20.6
Q4-1	1,415	33.6	14.1



Tube Name: 004  
 CASE NUMBER:

Population	#Ev...	%Par...	%Total
All Events	10,000	###	100.0
P1	4,212	42.1	42.1
Q1-4	8	0.2	0.1
Q2-4	882	20.9	8.8
Q3-4	282	6.7	2.8
Q4-4	3,040	72.2	30.4

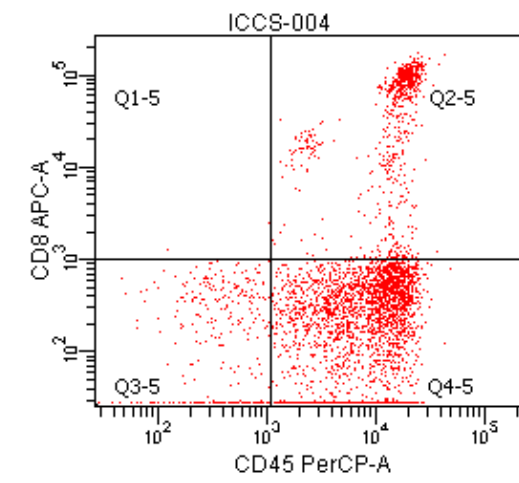
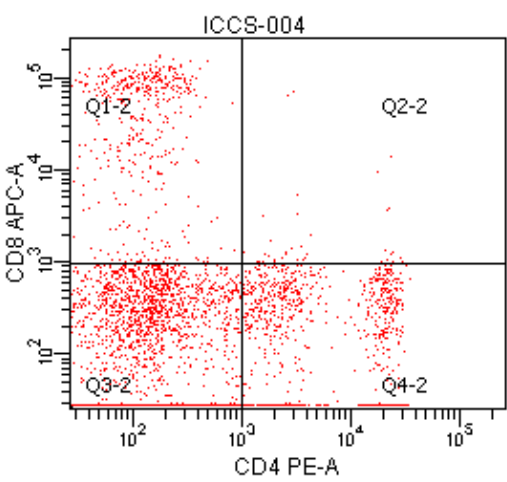


Tube Name: 004  
 CASE NUMBER:

Population	#Ev...	%Par...	%Total
All Events	10,000	###	100.0
P1	4,212	42.1	42.1
Q1-2	682	16.2	6.8
Q2-2	31	0.7	0.3
Q3-2	2,647	62.8	26.5
Q4-2	852	20.2	8.5

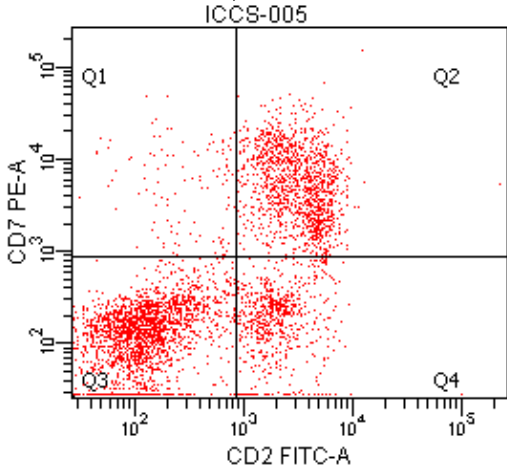
Tube Name: 004  
 Record Date: Jun 20, 2011...  
 CASE NUMBER:  
 SAMPLE ID: BMA  
 PATIENT ID:

Population	#Ev...	%Pa...	%To...
All Events	10,000	###	100.0
P1	4,212	42.1	42.1



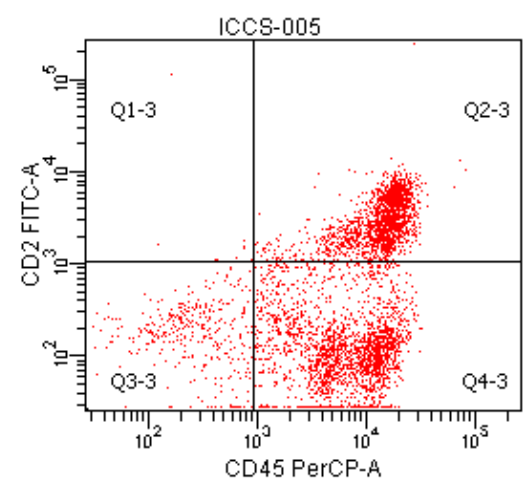
Tube Name: 004  
 CASE NUMBER:

Population	#Ev...	%Par...	%Total
All Events	10,000	###	100.0
P1	4,212	42.1	42.1
Q1-5	2	0.0	0.0
Q2-5	700	16.6	7.0
Q3-5	298	7.1	3.0
Q4-5	3,212	76.3	32.1



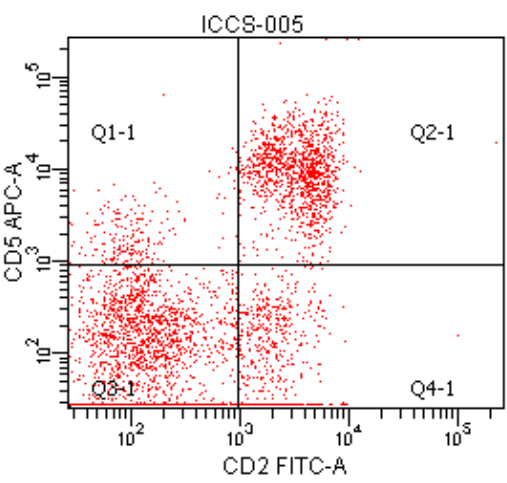
Tube Name: 005  
 Record Date: Jun 20, 2011 2:00  
 CASE NUMBER:

Population	#Events	%Par...	%To...
All Events	10,000	###	100.0
P1	4,341	43.4	43.4
Q1	107	2.5	1.1
Q2	1,256	28.9	12.6
Q3	2,348	54.1	23.5
Q4	630	14.5	6.3



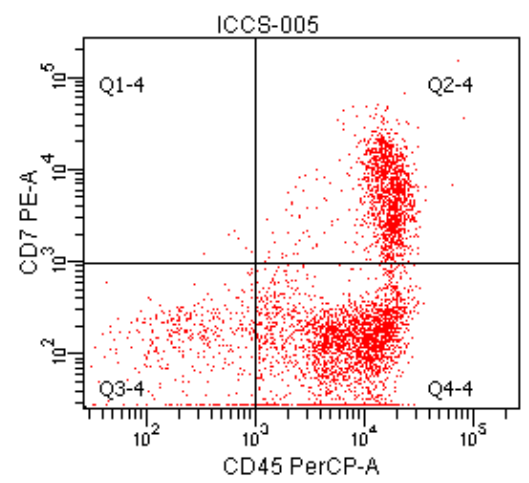
Tube Name: 005  
 CASE NUMBER:

Population	#Ev...	%Par...	%Total
All Events	10,000	###	100.0
P1	4,341	43.4	43.4
Q1-3	7	0.2	0.1
Q2-3	1,777	40.9	17.8
Q3-3	348	8.0	3.5
Q4-3	2,209	50.9	22.1



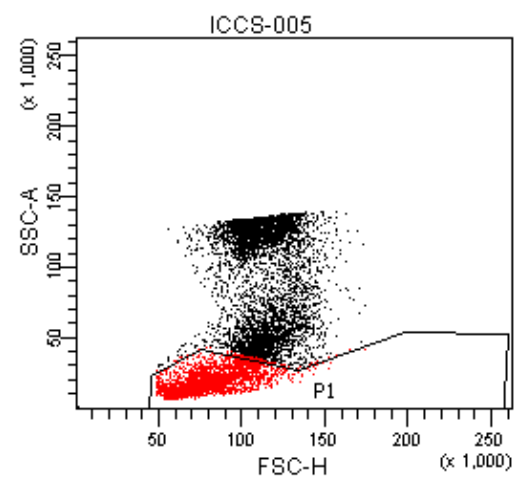
Tube Name: 005  
 CASE NUMBER:

Population	#Ev...	%Par...	%Total
All Events	10,000	###	100.0
P1	4,341	43.4	43.4
Q1-1	211	4.9	2.1
Q2-1	1,157	26.7	11.6
Q3-1	2,295	52.9	23.0
Q4-1	678	15.6	6.8



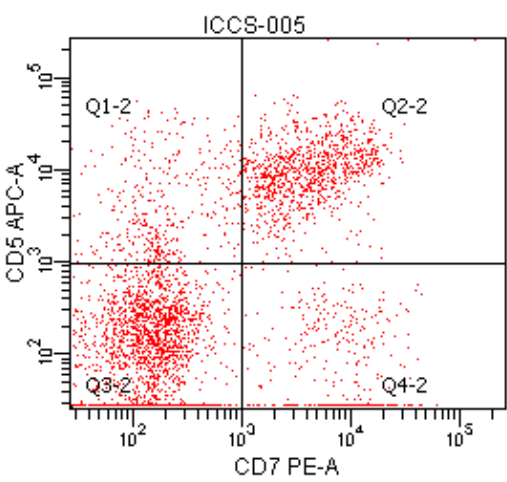
Tube Name: 005  
 CASE NUMBER:

Population	#Ev...	%Par...	%Total
All Events	10,000	###	100.0
P1	4,341	43.4	43.4
Q1-4	6	0.1	0.1
Q2-4	1,346	31.0	13.5
Q3-4	373	8.6	3.7
Q4-4	2,617	60.3	26.2



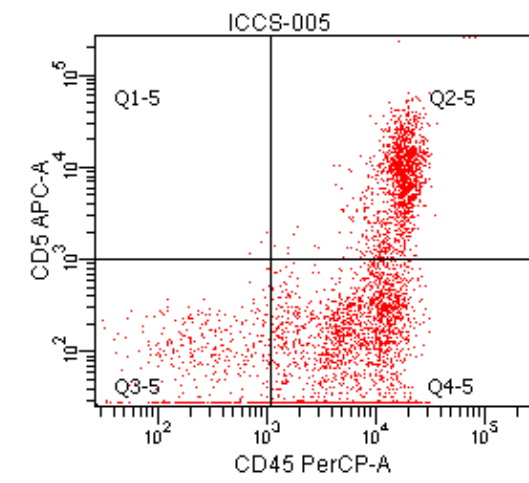
Tube Name: 005  
 Record Date: Jun 20, 2011...  
 CASE NUMBER:  
 SAMPLE ID: BMA  
 PATIENT ID:

Population	#Ev...	%Pa...	%To...
All Events	10,000	###	100.0
P1	4,341	43.4	43.4



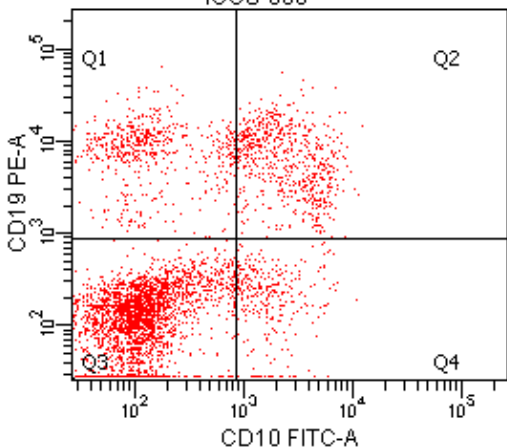
Tube Name: 005  
 CASE NUMBER:

Population	#Ev...	%Par...	%Total
All Events	10,000	###	100.0
P1	4,341	43.4	43.4
Q1-2	394	9.1	3.9
Q2-2	960	22.1	9.6
Q3-2	2,603	60.0	26.0
Q4-2	384	8.8	3.8



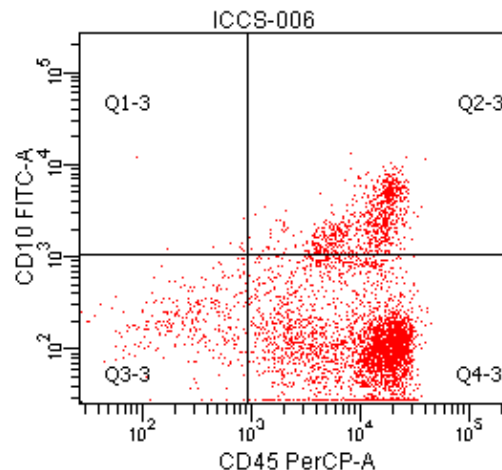
Tube Name: 005  
 CASE NUMBER:

Population	#Ev...	%Par...	%Total
All Events	10,000	###	100.0
P1	4,341	43.4	43.4
Q1-5	3	0.1	0.0
Q2-5	1,337	30.8	13.4
Q3-5	399	9.2	4.0
Q4-5	2,602	59.9	26.0



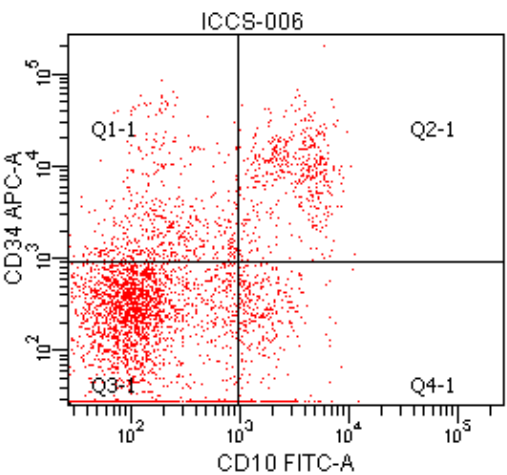
Tube Name: 006  
 Record Date: Jun 20, 2011 2:00  
 CASE NUMBER:

Population	#Events	%Par...	%Total
All Events	10,000	###	100.0
P1	4,235	42.4	42.4
Q1	565	13.3	5.6
Q2	638	15.1	6.4
Q3	2,736	64.6	27.4
Q4	296	7.0	3.0



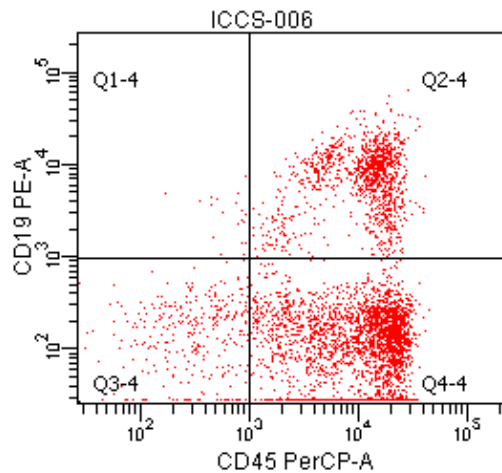
Tube Name: 006  
 CASE NUMBER:

Population	#Events	%Par...	%Total
All Events	10,000	###	100.0
P1	4,235	42.4	42.4
Q1-3	9	0.2	0.1
Q2-3	803	19.0	8.0
Q3-3	297	7.0	3.0
Q4-3	3,126	73.8	31.3



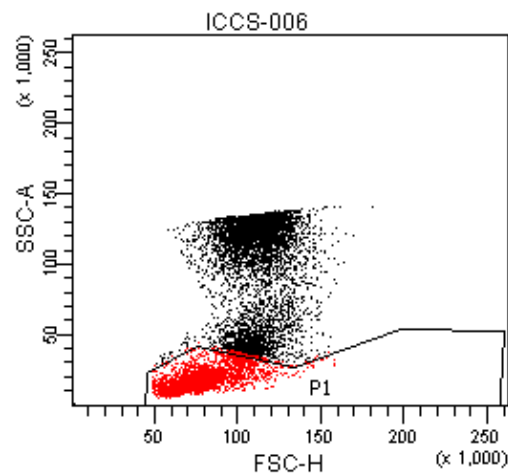
Tube Name: 006  
 CASE NUMBER:

Population	#Events	%Par...	%Total
All Events	10,000	###	100.0
P1	4,235	42.4	42.4
Q1-1	499	11.8	5.0
Q2-1	470	11.1	4.7
Q3-1	2,862	67.6	28.6
Q4-1	404	9.5	4.0



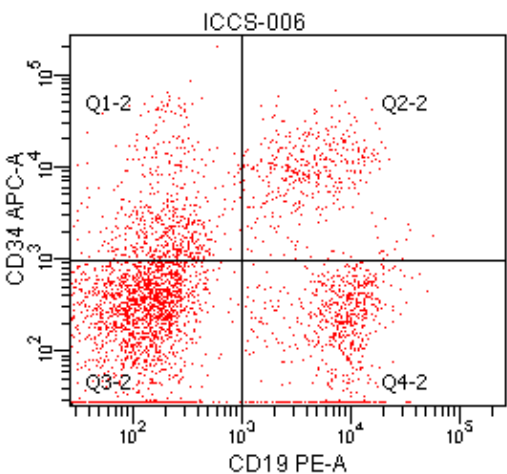
Tube Name: 006  
 CASE NUMBER:

Population	#Events	%Par...	%Total
All Events	10,000	###	100.0
P1	4,235	42.4	42.4
Q1-4	19	0.4	0.2
Q2-4	1,179	27.8	11.8
Q3-4	303	7.2	3.0
Q4-4	2,734	64.6	27.3



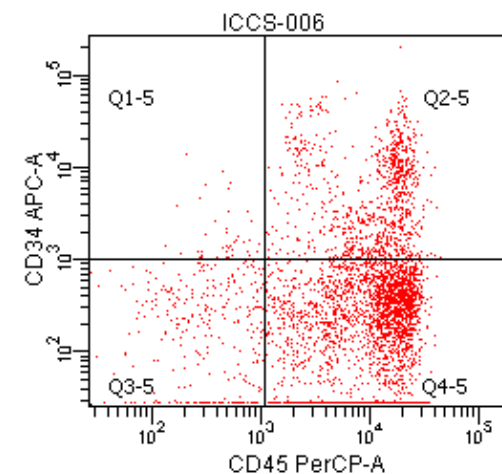
Tube Name: 006  
 Record Date: Jun 20, 2011...  
 CASE NUMBER:  
 SAMPLE ID: BMA  
 PATIENT ID:

Population	#Events	%Pa...	%To...
All Events	10,000	###	100.0
P1	4,235	42.4	42.4



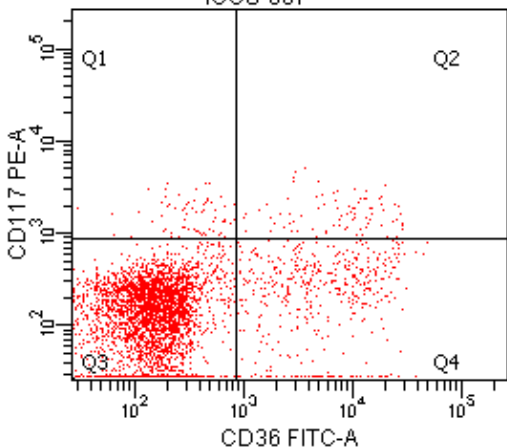
Tube Name: 006  
 CASE NUMBER:

Population	#Events	%Par...	%Total
All Events	10,000	###	100.0
P1	4,235	42.4	42.4
Q1-2	559	13.2	5.6
Q2-2	390	9.2	3.9
Q3-2	2,483	58.6	24.8
Q4-2	803	19.0	8.0



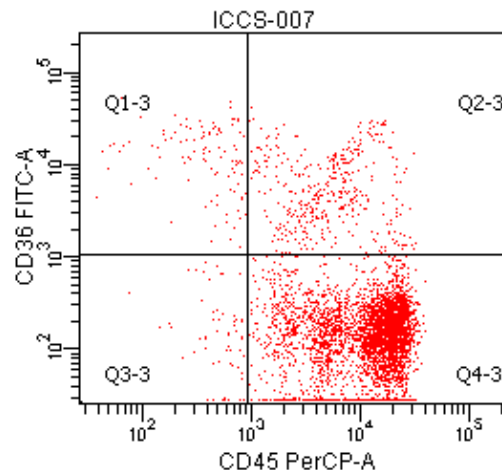
Tube Name: 006  
 CASE NUMBER:

Population	#Events	%Par...	%Total
All Events	10,000	###	100.0
P1	4,235	42.4	42.4
Q1-5	37	0.9	0.4
Q2-5	891	21.0	8.9
Q3-5	300	7.1	3.0
Q4-5	3,007	71.0	30.1



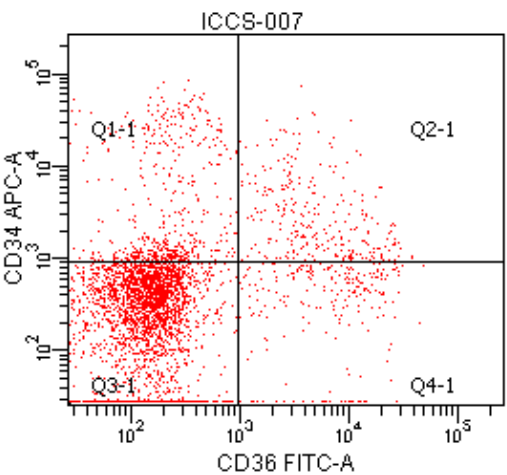
Tube Name: 007  
 Record Date: Jun 20, 2011 2:00  
 CASE NUMBER:

Population	#Events	%Par...	%To...
All Events	10,000	###	100.0
P1	4,869	48.7	48.7
Q1	67	1.4	0.7
Q2	80	1.6	0.8
Q3	4,272	87.7	42.7
Q4	450	9.2	4.5



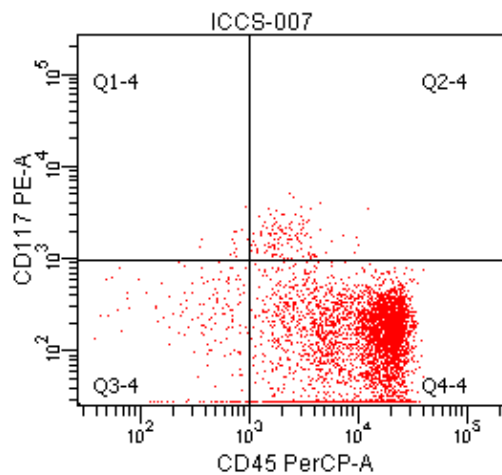
Tube Name: 007  
 CASE NUMBER:

Population	#Ev...	%Par...	%Total
All Events	10,000	###	100.0
P1	4,869	48.7	48.7
Q1-3	114	2.3	1.1
Q2-3	392	8.1	3.9
Q3-3	58	1.2	0.6
Q4-3	4,305	88.4	43.0



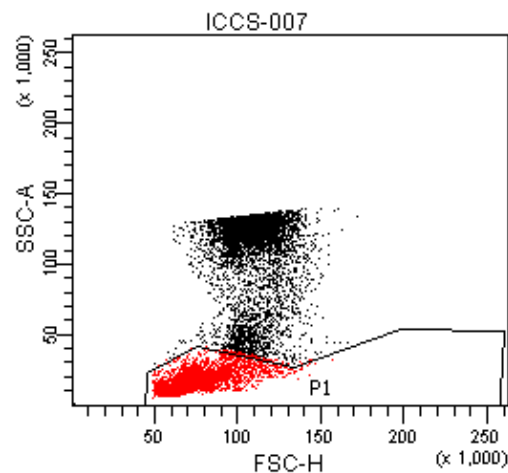
Tube Name: 007  
 CASE NUMBER:

Population	#Ev...	%Par...	%Total
All Events	10,000	###	100.0
P1	4,869	48.7	48.7
Q1-1	484	9.9	4.8
Q2-1	272	5.6	2.7
Q3-1	3,868	79.4	38.7
Q4-1	246	5.0	2.4



Tube Name: 007  
 CASE NUMBER:

Population	#Ev...	%Par...	%Total
All Events	10,000	###	100.0
P1	4,869	48.7	48.7
Q1-4	13	0.3	0.1
Q2-4	121	2.5	1.2
Q3-4	165	3.4	1.7
Q4-4	4,570	93.9	45.7

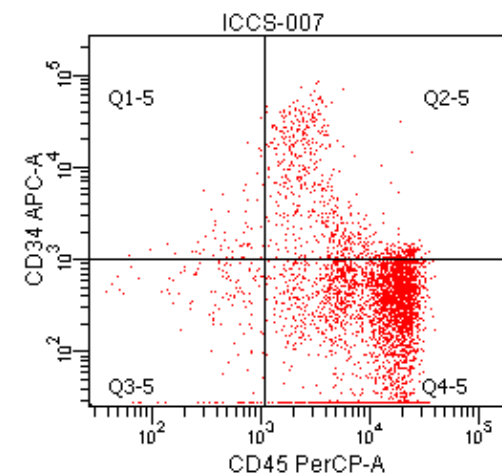
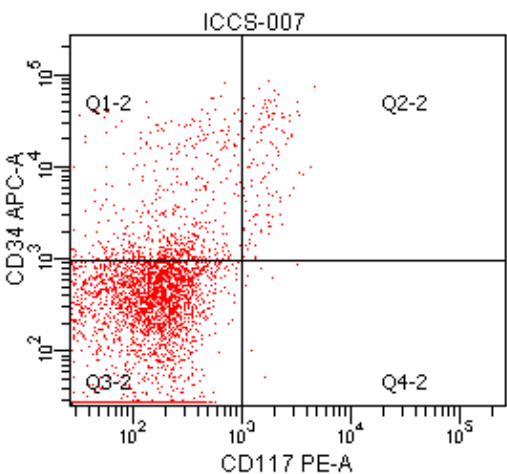


Tube Name: 007  
 CASE NUMBER:

Population	#Ev...	%Par...	%Total
All Events	10,000	###	100.0
P1	4,869	48.7	48.7
Q1-2	569	11.7	5.7
Q2-2	123	2.5	1.2
Q3-2	4,169	85.6	41.7
Q4-2	8	0.2	0.1

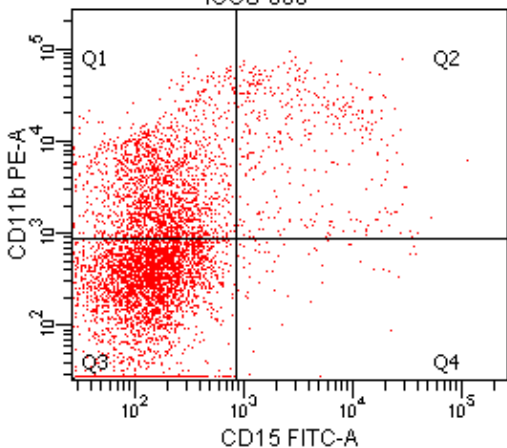
Tube Name: 007  
 Record Date: Jun 20, 2011...  
 CASE NUMBER:  
 SAMPLE ID: BMA  
 PATIENT ID:

Population	#Ev...	%Pa...	%To...
All Events	10,000	###	100.0
P1	4,869	48.7	48.7



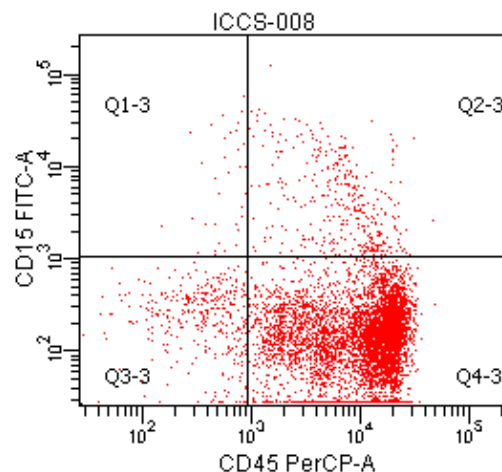
Tube Name: 007  
 CASE NUMBER:

Population	#Ev...	%Par...	%Total
All Events	10,000	###	100.0
P1	4,869	48.7	48.7
Q1-5	55	1.1	0.5
Q2-5	588	12.1	5.9
Q3-5	137	2.8	1.4
Q4-5	4,089	84.0	40.9



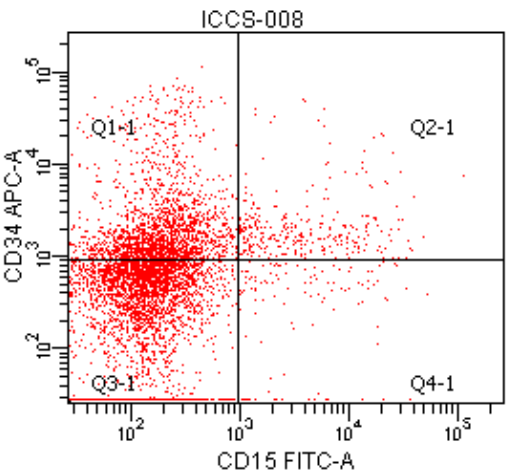
Tube Name: 008  
 Record Date: Jun 20, 2011 2:00  
 CASE NUMBER:

Population	#Events	%Par...	%Total
All Events	10,000	###	100.0
P1	6,261	62.6	62.6
Q1	1,751	28.0	17.5
Q2	377	6.0	3.8
Q3	4,065	64.9	40.6
Q4	68	1.1	0.7



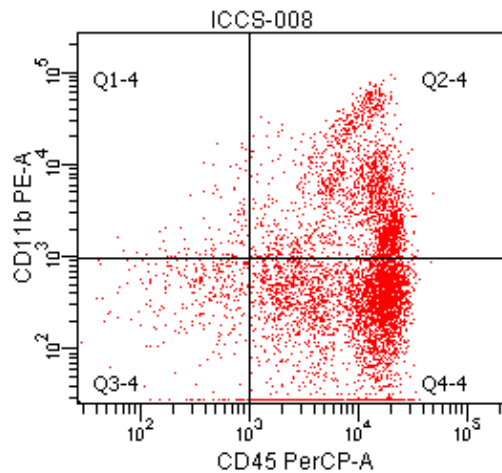
Tube Name: 008  
 CASE NUMBER:

Population	#Ev...	%Par...	%Total
All Events	10,000	###	100.0
P1	6,261	62.6	62.6
Q1-3	33	0.5	0.3
Q2-3	362	5.8	3.6
Q3-3	371	5.9	3.7
Q4-3	5,495	87.8	54.9



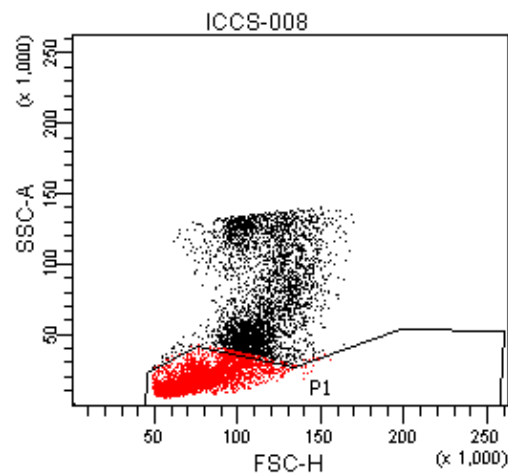
Tube Name: 008  
 CASE NUMBER:

Population	#Ev...	%Par...	%Total
All Events	10,000	###	100.0
P1	6,261	62.6	62.6
Q1-1	1,752	28.0	17.5
Q2-1	292	4.7	2.9
Q3-1	4,093	65.4	40.9
Q4-1	124	2.0	1.2



Tube Name: 008  
 CASE NUMBER:

Population	#Ev...	%Par...	%Total
All Events	10,000	###	100.0
P1	6,261	62.6	62.6
Q1-4	84	1.3	0.8
Q2-4	1,917	30.6	19.2
Q3-4	340	5.4	3.4
Q4-4	3,920	62.6	39.2

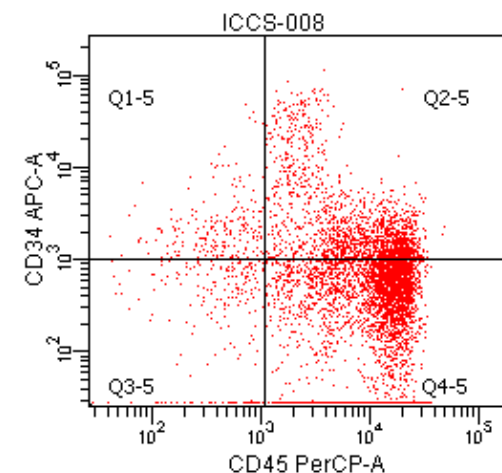
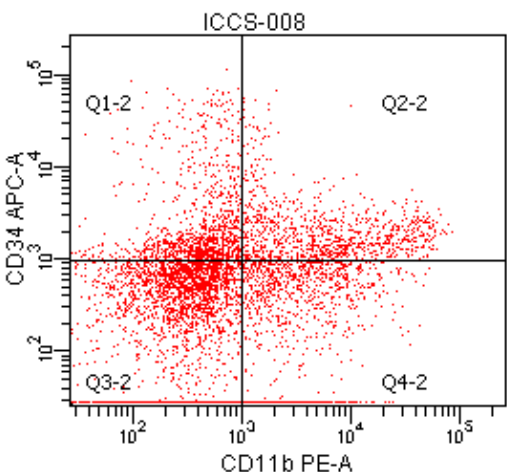


Tube Name: 008  
 CASE NUMBER:

Population	#Ev...	%Par...	%Total
All Events	10,000	###	100.0
P1	6,261	62.6	62.6
Q1-2	1,022	16.3	10.2
Q2-2	906	14.5	9.1
Q3-2	3,259	52.1	32.6
Q4-2	1,074	17.2	10.7

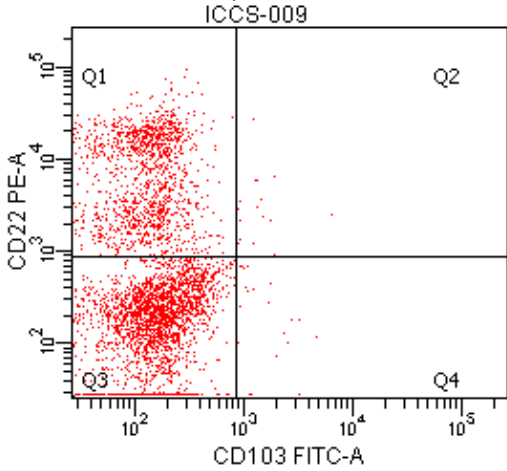
Tube Name: 008  
 Record Date: Jun 20, 2011...  
 CASE NUMBER:  
 SAMPLE ID: BMA  
 PATIENT ID:

Population	#Ev...	%Pa...	%To...
All Events	10,000	###	100.0
P1	6,261	62.6	62.6



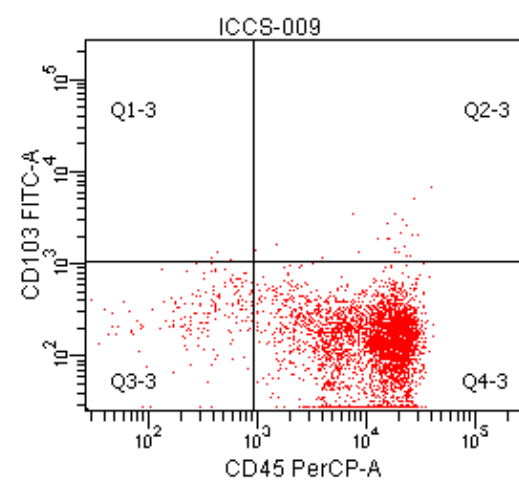
Tube Name: 008  
 CASE NUMBER:

Population	#Ev...	%Par...	%Total
All Events	10,000	###	100.0
P1	6,261	62.6	62.6
Q1-5	201	3.2	2.0
Q2-5	1,627	26.0	16.3
Q3-5	242	3.9	2.4
Q4-5	4,191	66.9	41.9



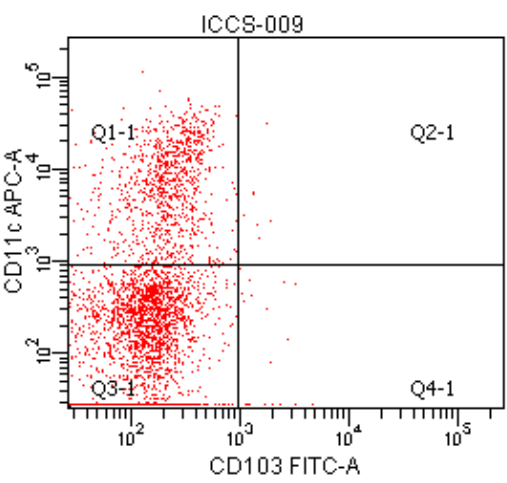
Tube Name: 009  
 Record Date: Jun 20, 2011 2:...

Population	#Events	%Par...	%To...
All Events	10,000	###	100.0
P1	4,239	42.4	42.4
Q1	1,436	33.9	14.4
Q2	19	0.4	0.2
Q3	2,763	65.2	27.6
Q4	21	0.5	0.2



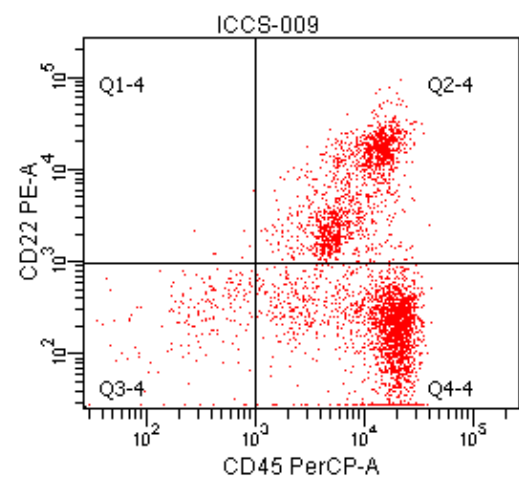
Tube Name: 009  
 CASE NUMBER:

Population	#Ev...	%Par...	%Total
All Events	10,000	###	100.0
P1	4,239	42.4	42.4
Q1-3	3	0.1	0.0
Q2-3	23	0.5	0.2
Q3-3	186	4.4	1.9
Q4-3	4,027	95.0	40.3



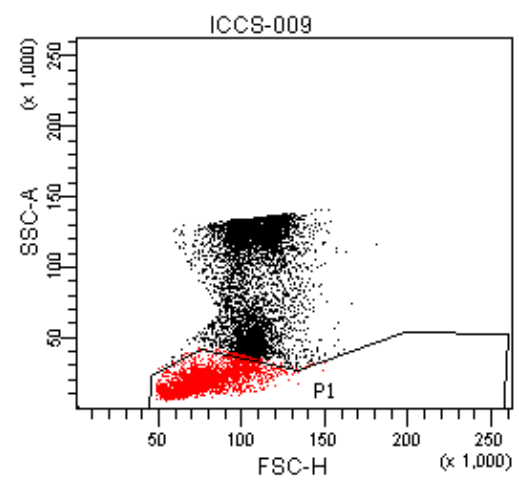
Tube Name: 009  
 CASE NUMBER:

Population	#Ev...	%Par...	%Total
All Events	10,000	###	100.0
P1	4,239	42.4	42.4
Q1-1	938	22.1	9.4
Q2-1	10	0.2	0.1
Q3-1	3,271	77.2	32.7
Q4-1	20	0.5	0.2



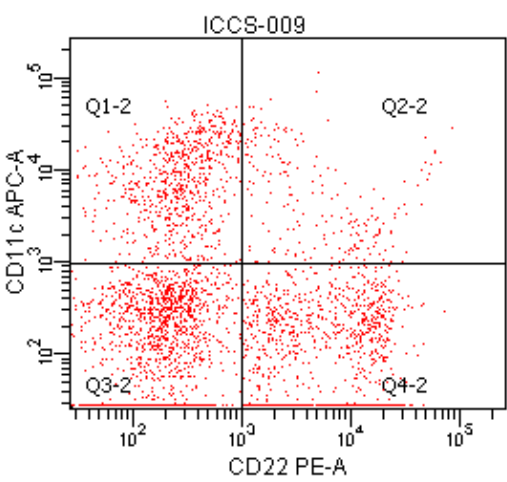
Tube Name: 009  
 CASE NUMBER:

Population	#Ev...	%Par...	%Total
All Events	10,000	###	100.0
P1	4,239	42.4	42.4
Q1-4	7	0.2	0.1
Q2-4	1,429	33.7	14.3
Q3-4	187	4.4	1.9
Q4-4	2,616	61.7	26.2



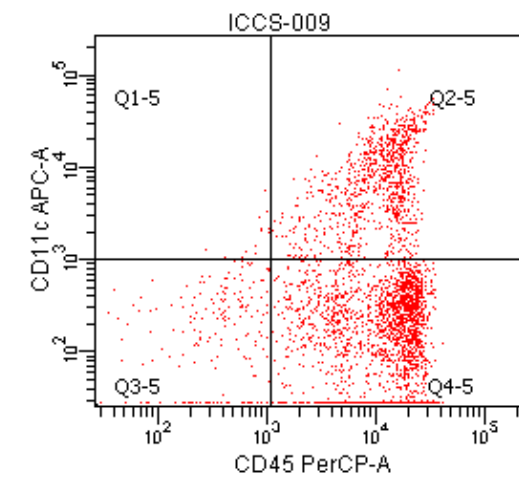
Tube Name: 009  
 Record Date: Jun 20, 2011...  
 CASE NUMBER:  
 SAMPLE ID: BMA  
 PATIENT ID:

Population	#Ev...	%Pa...	%To...
All Events	10,000	###	100.0
P1	4,239	42.4	42.4



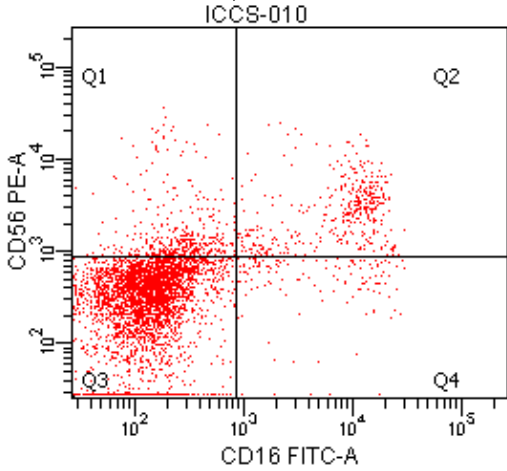
Tube Name: 009  
 CASE NUMBER:

Population	#Ev...	%Par...	%Total
All Events	10,000	###	100.0
P1	4,239	42.4	42.4
Q1-2	734	17.3	7.3
Q2-2	203	4.8	2.0
Q3-2	2,073	48.9	20.7
Q4-2	1,229	29.0	12.3



Tube Name: 009  
 CASE NUMBER:

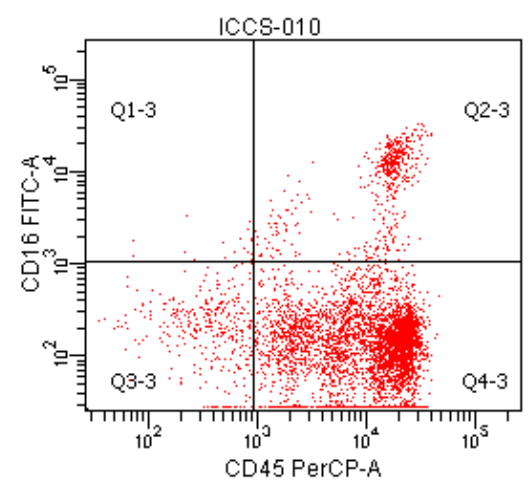
Population	#Ev...	%Par...	%Total
All Events	10,000	###	100.0
P1	4,239	42.4	42.4
Q1-5	11	0.3	0.1
Q2-5	911	21.5	9.1
Q3-5	195	4.6	2.0
Q4-5	3,122	73.6	31.2



Tube Name: 010  
 Record Date: Jun 20, 2011 2:...

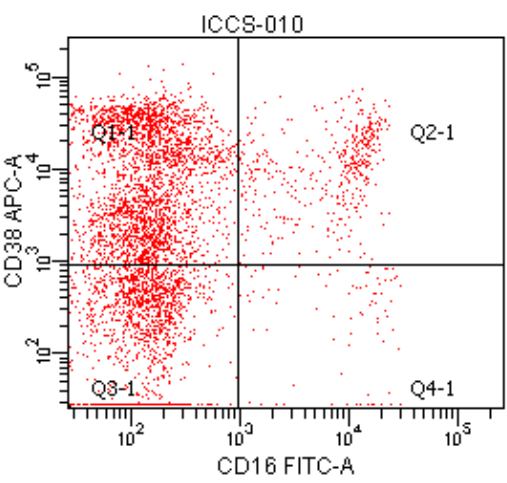
CASE NUMBER:

Population	#Ev...	%Par...	%To...
All Events	10,000	####	100.0
P1	5,021	50.2	50.2
Q1	376	7.5	3.8
Q2	379	7.5	3.8
Q3	4,122	82.1	41.2
Q4	144	2.9	1.4



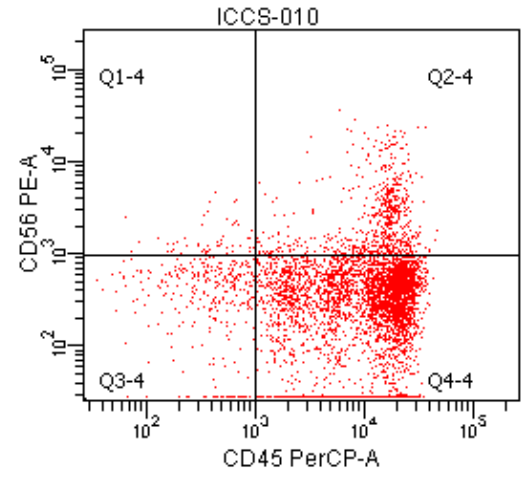
Tube Name: 010  
 CASE NUMBER:

Population	#Ev...	%Par...	%Total
All Events	10,000	####	100.0
P1	5,021	50.2	50.2
Q1-3	13	0.3	0.1
Q2-3	474	9.4	4.7
Q3-3	370	7.4	3.7
Q4-3	4,164	82.9	41.6



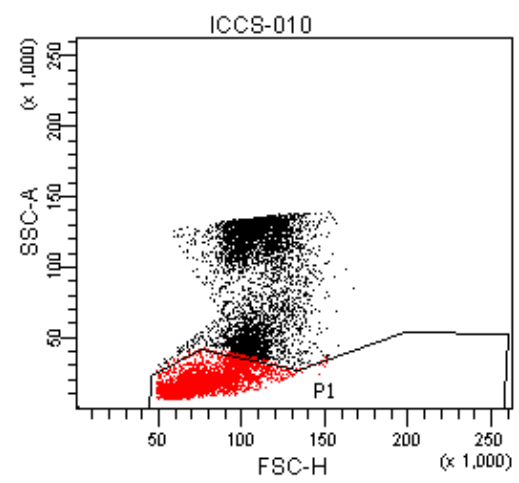
Tube Name: 010  
 CASE NUMBER:

Population	#Ev...	%Par...	%Total
All Events	10,000	####	100.0
P1	5,021	50.2	50.2
Q1-1	2,720	54.2	27.2
Q2-1	417	8.3	4.2
Q3-1	1,795	35.7	18.0
Q4-1	89	1.8	0.9



Tube Name: 010  
 CASE NUMBER:

Population	#Ev...	%Par...	%Total
All Events	10,000	####	100.0
P1	5,021	50.2	50.2
Q1-4	50	1.0	0.5
Q2-4	605	12.0	6.0
Q3-4	349	7.0	3.5
Q4-4	4,017	80.0	40.2

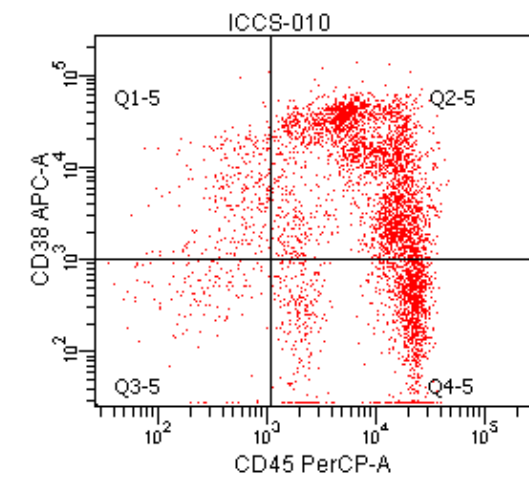
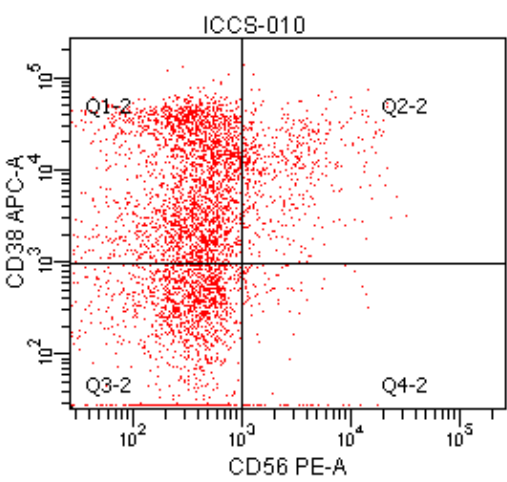


Tube Name: 010  
 CASE NUMBER:

Population	#Ev...	%Par...	%Total
All Events	10,000	####	100.0
P1	5,021	50.2	50.2
Q1-2	2,581	51.4	25.8
Q2-2	519	10.3	5.2
Q3-2	1,810	36.0	18.1
Q4-2	111	2.2	1.1

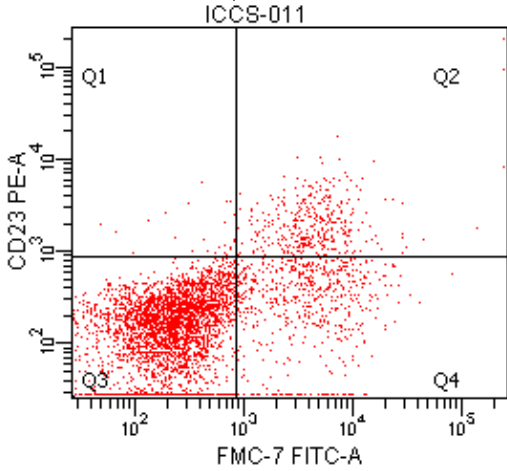
Tube Name: 010  
 Record Date: Jun 20, 2011...  
 CASE NUMBER:  
 SAMPLE ID: BMA  
 PATIENT ID:

Population	#Ev...	%Pa...	%To...
All Events	10,000	####	100.0
P1	5,021	50.2	50.2



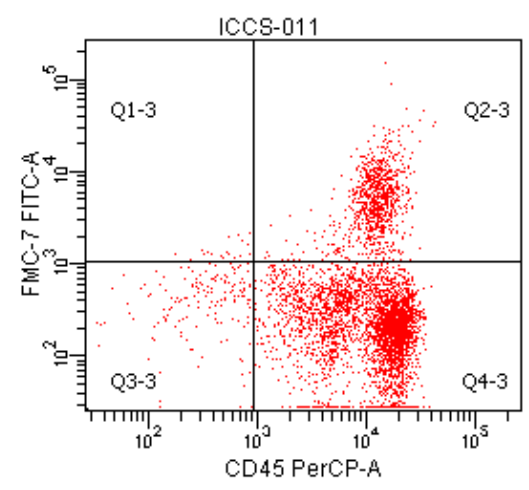
Tube Name: 010  
 CASE NUMBER:

Population	#Ev...	%Par...	%Total
All Events	10,000	####	100.0
P1	5,021	50.2	50.2
Q1-5	266	5.3	2.7
Q2-5	2,806	55.9	28.1
Q3-5	158	3.1	1.6
Q4-5	1,791	35.7	17.9



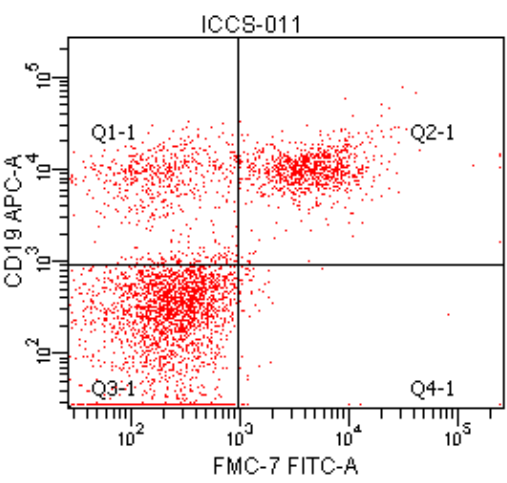
Tube Name: 011  
 Record Date: Jun 20, 2011 2:...

Population	#Ev...	%Par...	%To...
All Events	10,000	###	100.0
P1	4,680	46.8	46.8
Q1	24	0.5	0.2
Q2	348	7.4	3.5
Q3	3,695	79.0	37.0
Q4	613	13.1	6.1



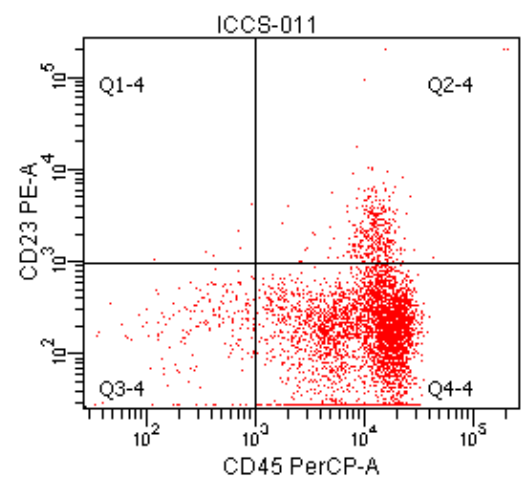
Tube Name: 011  
 CASE NUMBER:

Population	#Ev...	%Par...	%Total
All Events	10,000	###	100.0
P1	4,680	46.8	46.8
Q1-3	18	0.4	0.2
Q2-3	870	18.6	8.7
Q3-3	171	3.7	1.7
Q4-3	3,621	77.4	36.2



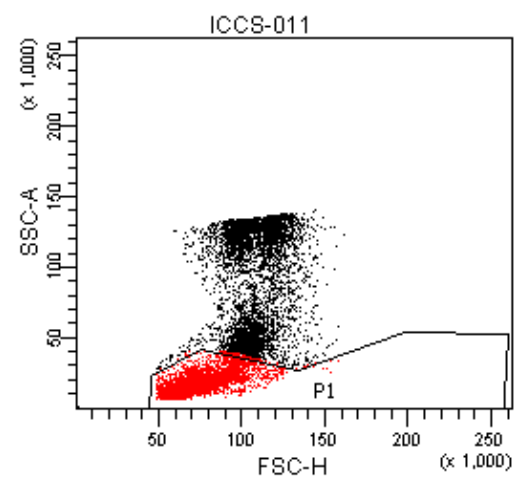
Tube Name: 011  
 CASE NUMBER:

Population	#Ev...	%Par...	%Total
All Events	10,000	###	100.0
P1	4,680	46.8	46.8
Q1-1	603	12.9	6.0
Q2-1	867	18.5	8.7
Q3-1	3,159	67.5	31.6
Q4-1	51	1.1	0.5



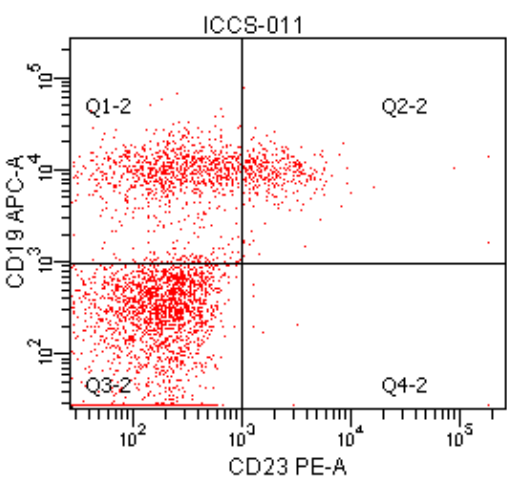
Tube Name: 011  
 CASE NUMBER:

Population	#Ev...	%Par...	%Total
All Events	10,000	###	100.0
P1	4,680	46.8	46.8
Q1-4	6	0.1	0.1
Q2-4	336	7.2	3.4
Q3-4	194	4.1	1.9
Q4-4	4,144	88.5	41.4



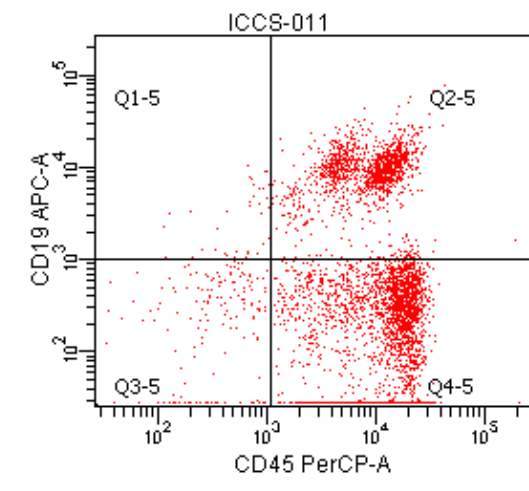
Tube Name: 011  
 Record Date: Jun 20, 2011...  
 CASE NUMBER:  
 SAMPLE ID: BMA  
 PATIENT ID:

Population	#Ev...	%Pa...	%To...
All Events	10,000	###	100.0
P1	4,680	46.8	46.8



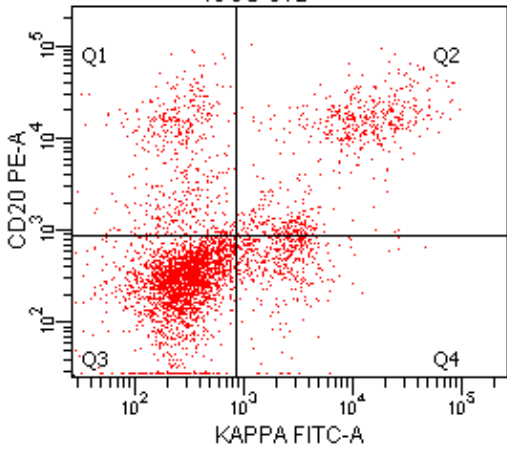
Tube Name: 011  
 CASE NUMBER:

Population	#Ev...	%Par...	%Total
All Events	10,000	###	100.0
P1	4,680	46.8	46.8
Q1-2	1,117	23.9	11.2
Q2-2	331	7.1	3.3
Q3-2	3,223	68.9	32.2
Q4-2	9	0.2	0.1



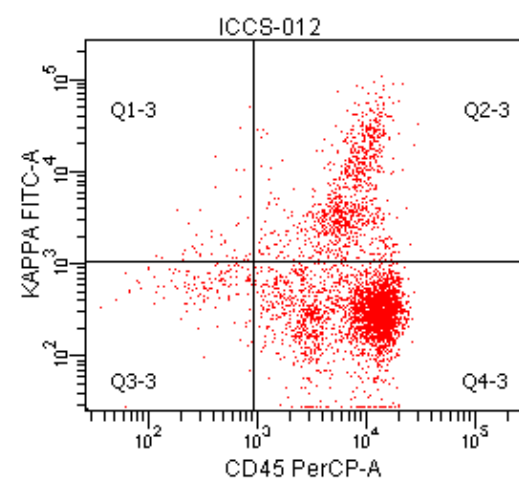
Tube Name: 011  
 CASE NUMBER:

Population	#Ev...	%Par...	%Total
All Events	10,000	###	100.0
P1	4,680	46.8	46.8
Q1-5	33	0.7	0.3
Q2-5	1,399	29.9	14.0
Q3-5	174	3.7	1.7
Q4-5	3,074	65.7	30.7



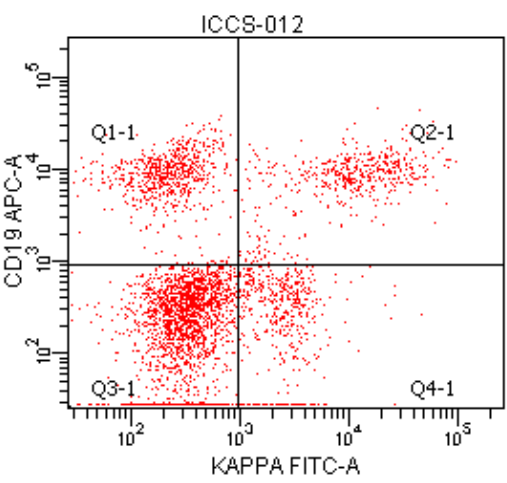
Tube Name: 012  
 Record Date: Jun 20, 2011 2:00  
 CASE NUMBER:

Population	#Events	%Par...	%To...
All Events	10,000	###	100.0
P1	4,000	40.0	40.0
Q1	487	12.2	4.9
Q2	610	15.2	6.1
Q3	2,467	61.7	24.7
Q4	436	10.9	4.4



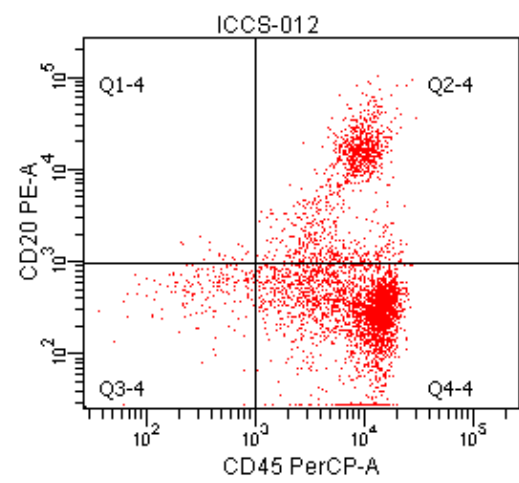
Tube Name: 012  
 CASE NUMBER:

Population	#Events	%Par...	%Total
All Events	10,000	###	100.0
P1	4,000	40.0	40.0
Q1-3	37	0.9	0.4
Q2-3	949	23.7	9.5
Q3-3	144	3.6	1.4
Q4-3	2,870	71.8	28.7



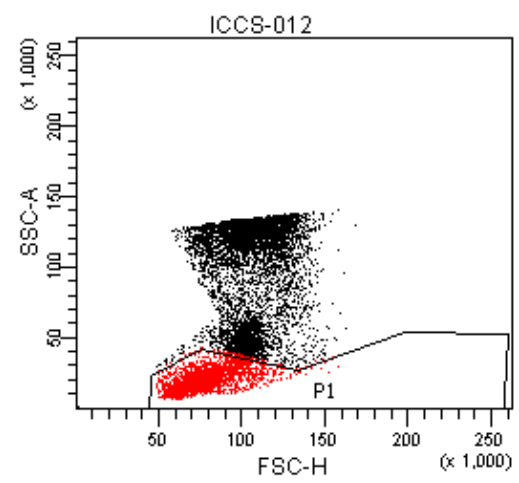
Tube Name: 012  
 CASE NUMBER:

Population	#Events	%Par...	%Total
All Events	10,000	###	100.0
P1	4,000	40.0	40.0
Q1-1	674	16.8	6.7
Q2-1	499	12.5	5.0
Q3-1	2,314	57.8	23.1
Q4-1	513	12.8	5.1



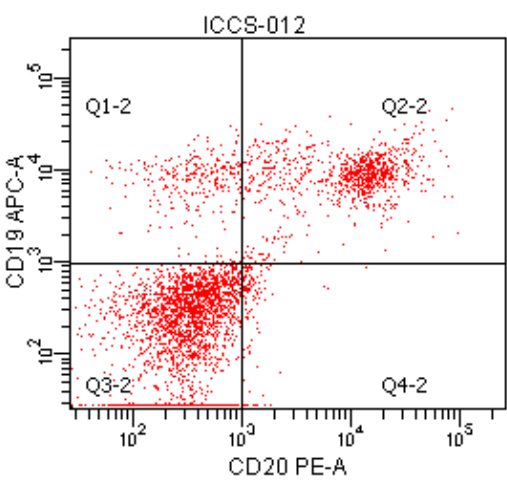
Tube Name: 012  
 CASE NUMBER:

Population	#Events	%Par...	%Total
All Events	10,000	###	100.0
P1	4,000	40.0	40.0
Q1-4	17	0.4	0.2
Q2-4	1,017	25.4	10.2
Q3-4	171	4.3	1.7
Q4-4	2,795	69.9	28.0



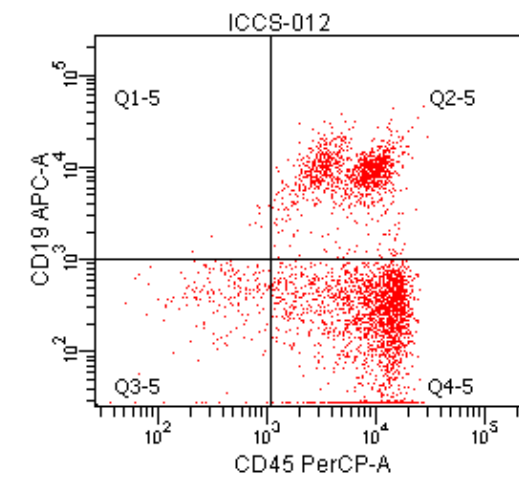
Tube Name: 012  
 Record Date: Jun 20, 2011...  
 CASE NUMBER:  
 SAMPLE ID: BMA  
 PATIENT ID:

Population	#Events	%Pa...	%To...
All Events	10,000	###	100.0
P1	4,000	40.0	40.0



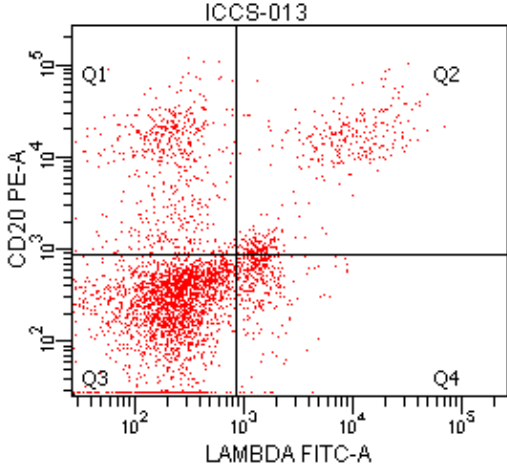
Tube Name: 012  
 CASE NUMBER:

Population	#Events	%Par...	%Total
All Events	10,000	###	100.0
P1	4,000	40.0	40.0
Q1-2	272	6.8	2.7
Q2-2	891	22.3	8.9
Q3-2	2,707	67.7	27.1
Q4-2	130	3.2	1.3



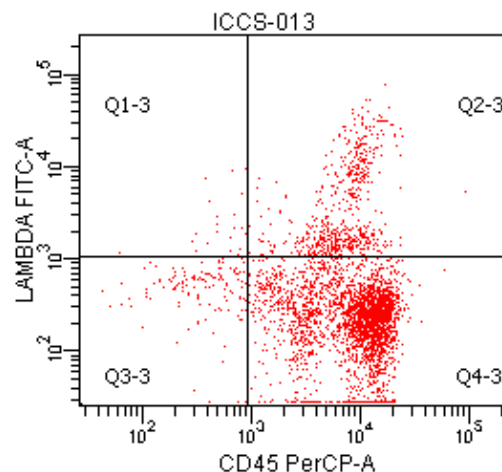
Tube Name: 012  
 CASE NUMBER:

Population	#Events	%Par...	%Total
All Events	10,000	###	100.0
P1	4,000	40.0	40.0
Q1-5	8	0.2	0.1
Q2-5	1,151	28.8	11.5
Q3-5	187	4.7	1.9
Q4-5	2,654	66.4	26.5



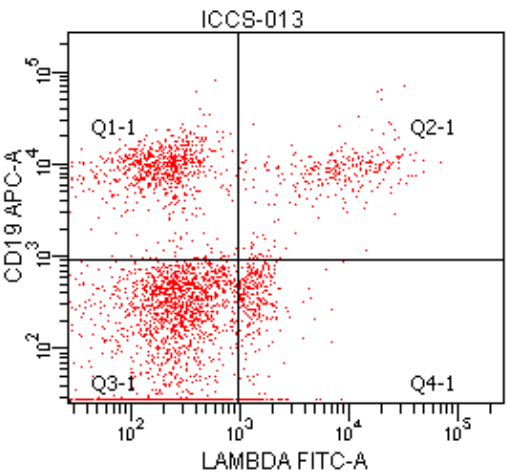
Tube Name: 013  
 Record Date: Jun 20, 2011 2:00  
 CASE NUMBER:

Population	#Events	%Par...	%To...
All Events	10,000	###	100.0
P1	3,581	35.8	35.8
Q1	541	15.1	5.4
Q2	359	10.0	3.6
Q3	2,353	65.7	23.5
Q4	328	9.2	3.3



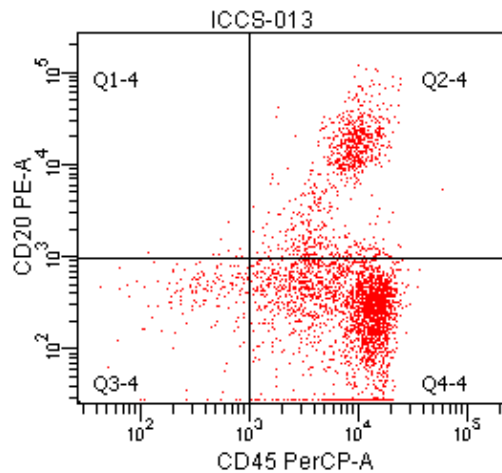
Tube Name: 013  
 CASE NUMBER:

Population	#Ev...	%Par...	%Total
All Events	10,000	###	100.0
P1	3,581	35.8	35.8
Q1-3	20	0.6	0.2
Q2-3	588	16.4	5.9
Q3-3	142	4.0	1.4
Q4-3	2,831	79.1	28.3



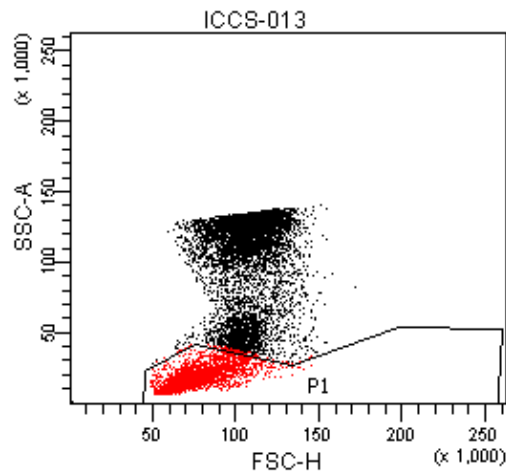
Tube Name: 013  
 CASE NUMBER:

Population	#Ev...	%Par...	%Total
All Events	10,000	###	100.0
P1	3,581	35.8	35.8
Q1-1	761	21.3	7.6
Q2-1	297	8.3	3.0
Q3-1	2,167	60.5	21.7
Q4-1	356	9.9	3.6



Tube Name: 013  
 CASE NUMBER:

Population	#Ev...	%Par...	%Total
All Events	10,000	###	100.0
P1	3,581	35.8	35.8
Q1-4	7	0.2	0.1
Q2-4	846	23.6	8.5
Q3-4	162	4.5	1.6
Q4-4	2,567	71.7	25.7

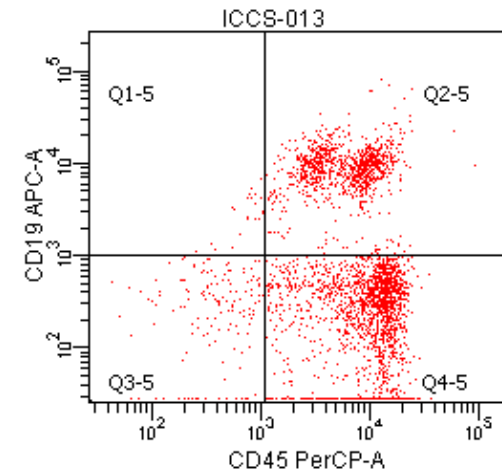
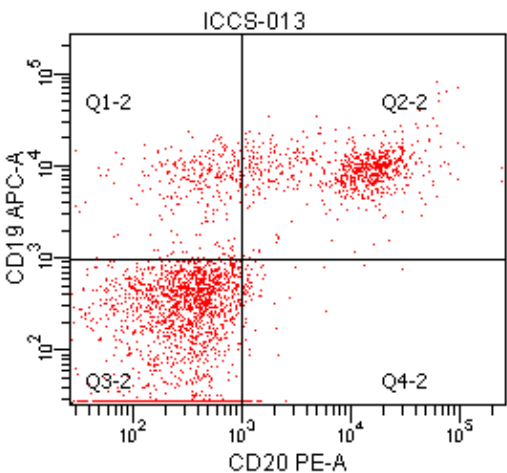


Tube Name: 013  
 CASE NUMBER:

Population	#Ev...	%Par...	%Total
All Events	10,000	###	100.0
P1	3,581	35.8	35.8
Q1-2	285	8.0	2.8
Q2-2	754	21.1	7.5
Q3-2	2,458	68.6	24.6
Q4-2	84	2.3	0.8

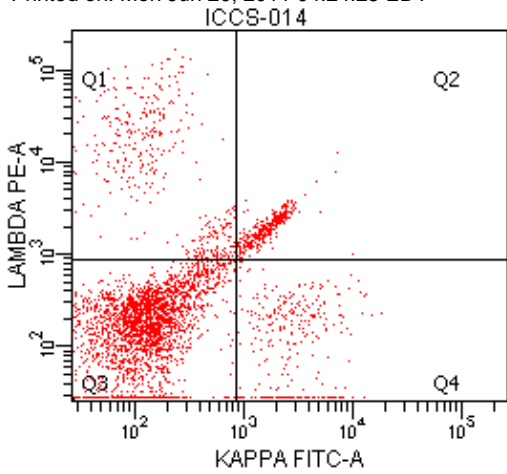
Tube Name: 013  
 Record Date: Jun 20, 2011...  
 CASE NUMBER:  
 SAMPLE ID: BMA  
 PATIENT ID:

Population	#Ev...	%Pa...	%To...
All Events	10,000	###	100.0
P1	3,581	35.8	35.8



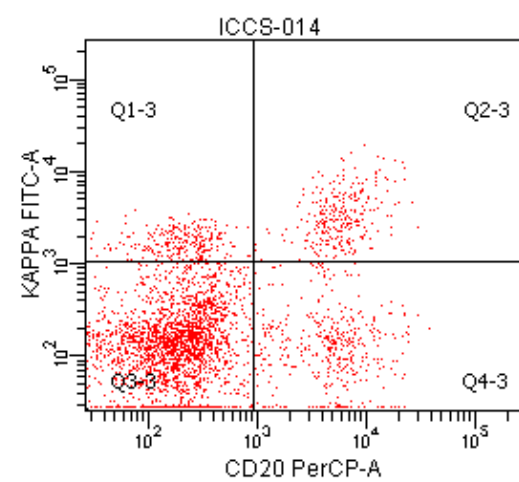
Tube Name: 013  
 CASE NUMBER:

Population	#Ev...	%Par...	%Total
All Events	10,000	###	100.0
P1	3,581	35.8	35.8
Q1-5	21	0.6	0.2
Q2-5	1,013	28.3	10.1
Q3-5	155	4.3	1.6
Q4-5	2,392	66.8	23.9



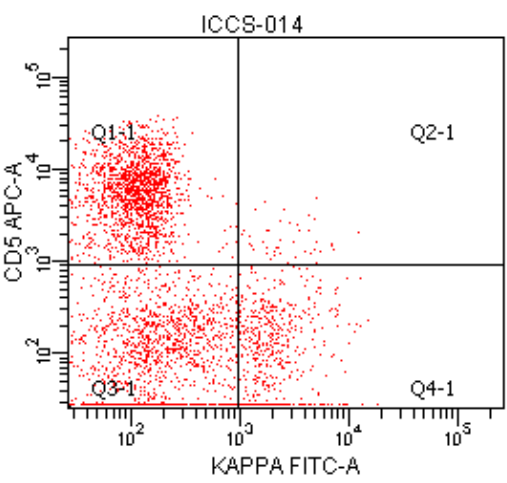
Tube Name: 014  
 Record Date: Jun 20, 2011 2:...

Population	#Ev...	%Par...	%To...
All Events	10,000	###	100.0
P1	3,755	37.6	37.6
Q1	382	10.2	3.8
Q2	335	8.9	3.4
Q3	2,747	73.2	27.5
Q4	291	7.7	2.9



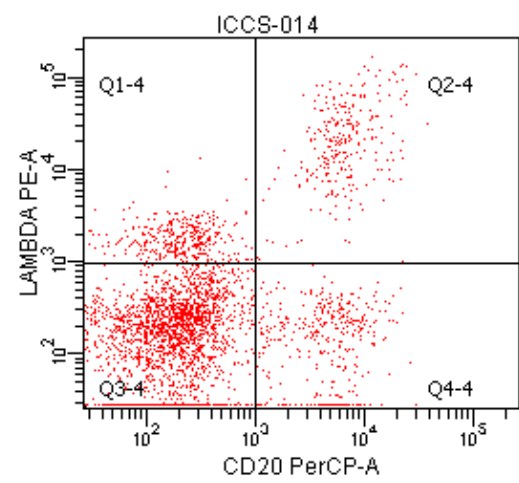
Tube Name: 014  
 CASE NUMBER:

Population	#Ev...	%Par...	%Total
All Events	10,000	###	100.0
P1	3,755	37.6	37.6
Q1-3	292	7.8	2.9
Q2-3	266	7.1	2.7
Q3-3	2,785	74.2	27.8
Q4-3	412	11.0	4.1



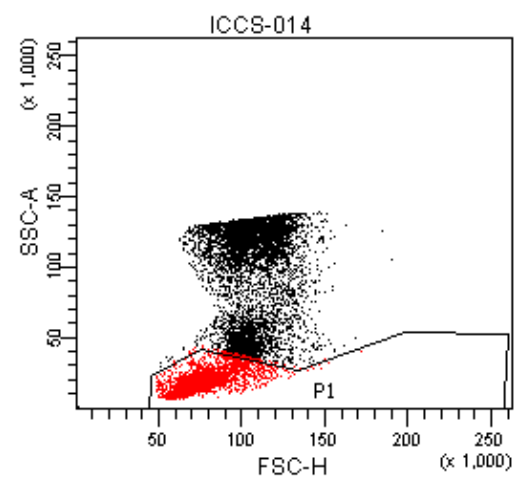
Tube Name: 014  
 CASE NUMBER:

Population	#Ev...	%Par...	%Total
All Events	10,000	###	100.0
P1	3,755	37.6	37.6
Q1-1	1,605	42.7	16.0
Q2-1	43	1.1	0.4
Q3-1	1,554	41.4	15.5
Q4-1	553	14.7	5.5



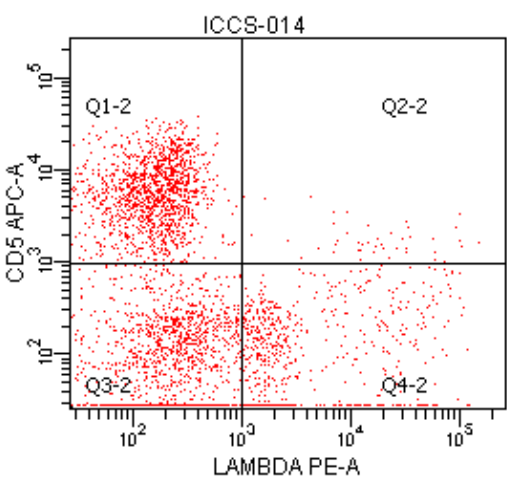
Tube Name: 014  
 CASE NUMBER:

Population	#Ev...	%Par...	%Total
All Events	10,000	###	100.0
P1	3,755	37.6	37.6
Q1-4	413	11.0	4.1
Q2-4	274	7.3	2.7
Q3-4	2,682	71.4	26.8
Q4-4	386	10.3	3.9



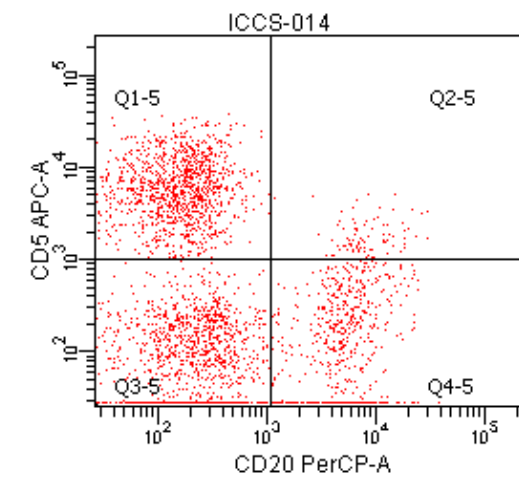
Tube Name: 014  
 Record Date: Jun 20, 2011...  
 CASE NUMBER:  
 SAMPLE ID: BMA  
 PATIENT ID:

Population	#Ev...	%Pa...	%To...
All Events	10,000	###	100.0
P1	3,755	37.6	37.6



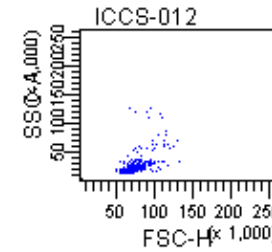
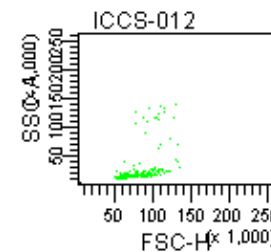
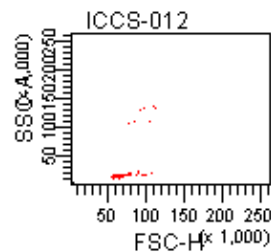
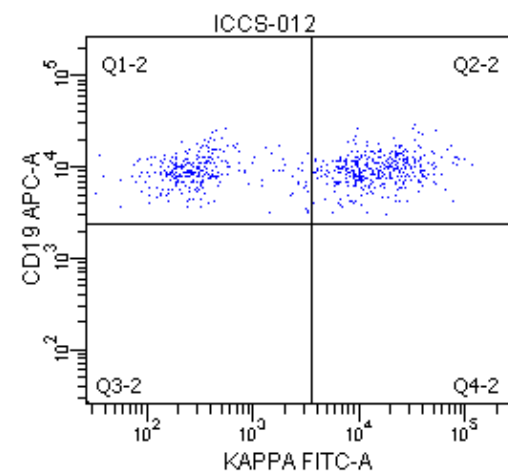
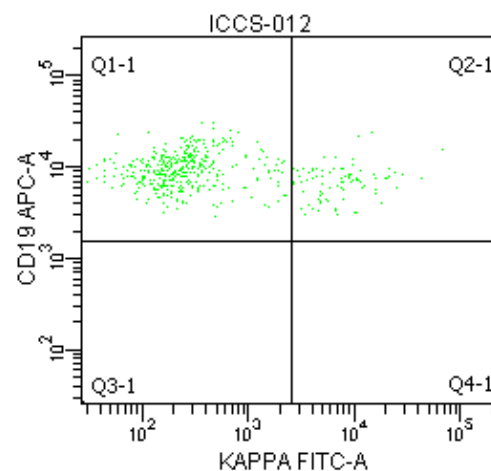
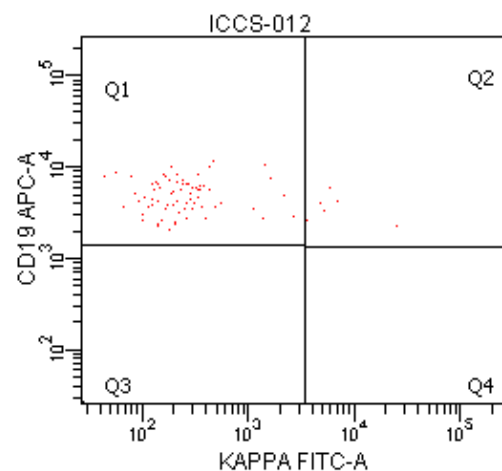
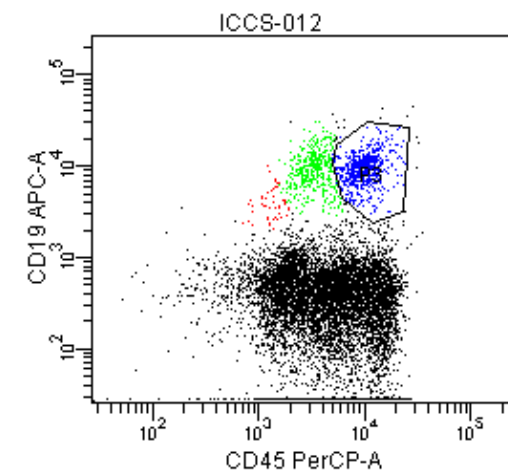
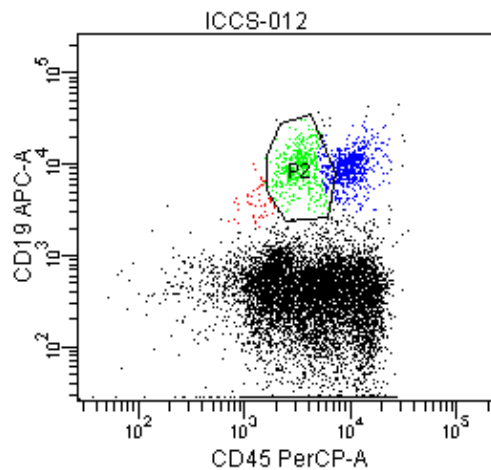
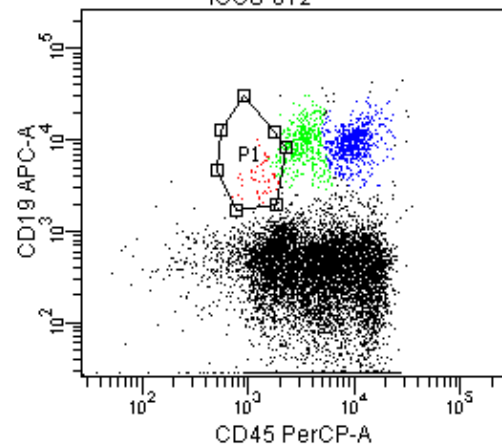
Tube Name: 014  
 CASE NUMBER:

Population	#Ev...	%Par...	%Total
All Events	10,000	###	100.0
P1	3,755	37.6	37.6
Q1-2	1,596	42.5	16.0
Q2-2	43	1.1	0.4
Q3-2	1,478	39.4	14.8
Q4-2	638	17.0	6.4



Tube Name: 014  
 CASE NUMBER:

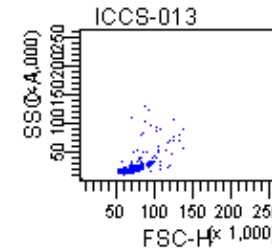
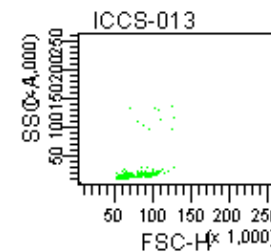
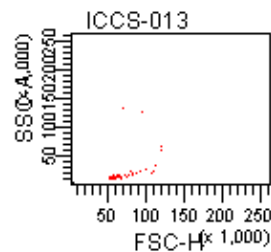
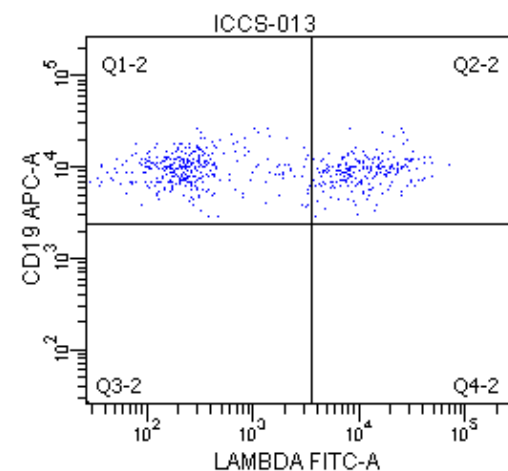
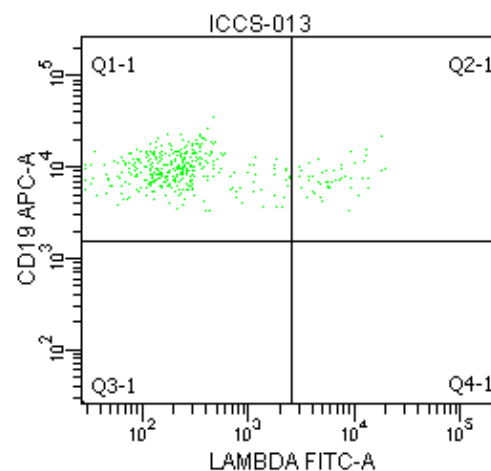
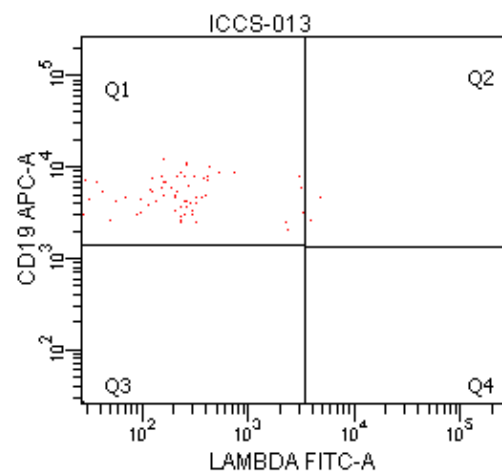
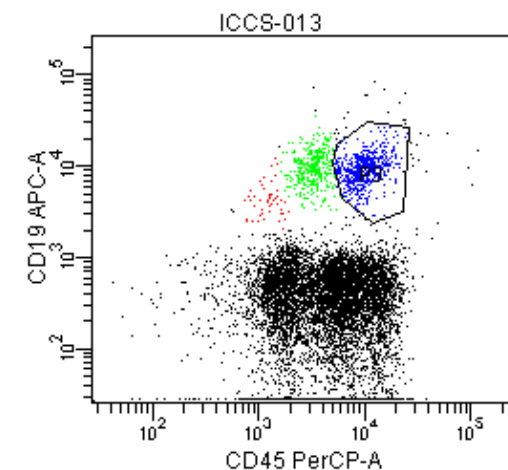
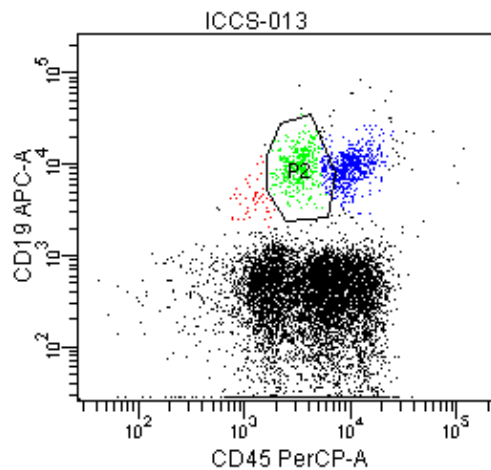
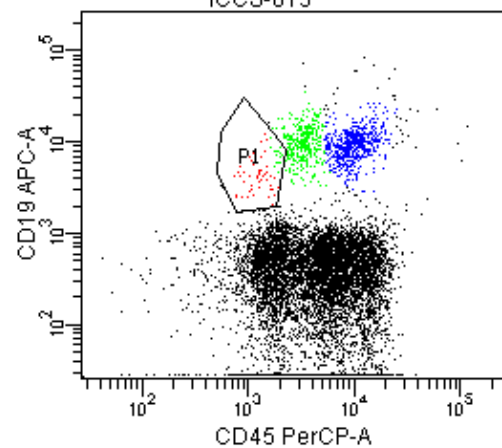
Population	#Ev...	%Par...	%Total
All Events	10,000	###	100.0
P1	3,755	37.6	37.6
Q1-5	1,547	41.2	15.5
Q2-5	86	2.3	0.9
Q3-5	1,558	41.5	15.6
Q4-5	564	15.0	5.6



Experiment Name: ICCS			
Specimen Name: ICCS			
Tube Name: 012			
Record Date: Jun 20, 2011...			
		KAP...	
Population	%Pa...	%Total	Mean
<span style="color: red;">■</span> P1	0.8	0.8	1,013
<span style="color: red;">⊠</span> Q1	92.2	0.7	354
<span style="color: red;">⊠</span> Q2	7.8	0.1	8,812

Experiment Name: ICCS			
Specimen Name: ICCS			
Tube Name: 012			
Record Date: Jun 20, 2011 2...			
		KAP...	
Population	%Par...	%Total	Mean
<span style="color: green;">■</span> P2	4.9	4.9	2,017
<span style="color: green;">⊠</span> Q1-1	82.4	4.0	339
<span style="color: green;">⊠</span> Q2-1	17.6	0.9	9,897

Experiment Name: ICCS			
Specimen Name: ICCS			
Tube Name: 012			
Record Date: Jun 20, 2011 ...			
		KAP...	
Population	%Par...	%Total	Mean
<span style="color: blue;">■</span> P3	6.8	6.8	12,152
<span style="color: blue;">⊠</span> Q1-2	41.8	2.8	492
<span style="color: blue;">⊠</span> Q2-2	58.2	3.9	20,518



Experiment Name: ICCS  
 Specimen Name: ICCS  
 Tube Name: 013  
 Record Date: Jun 20, 2011...

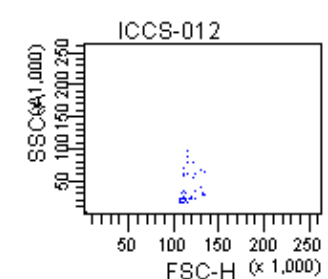
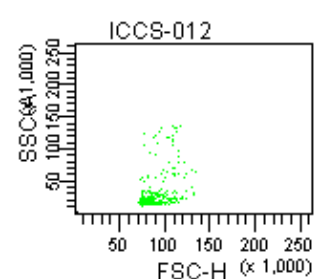
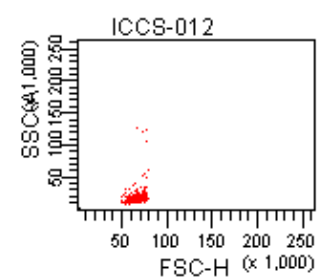
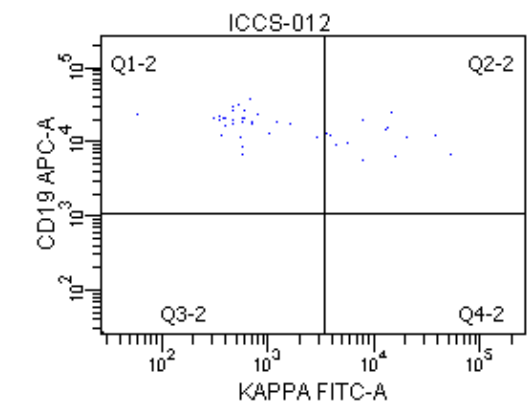
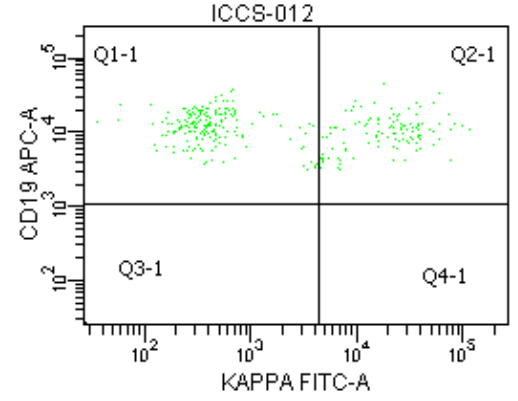
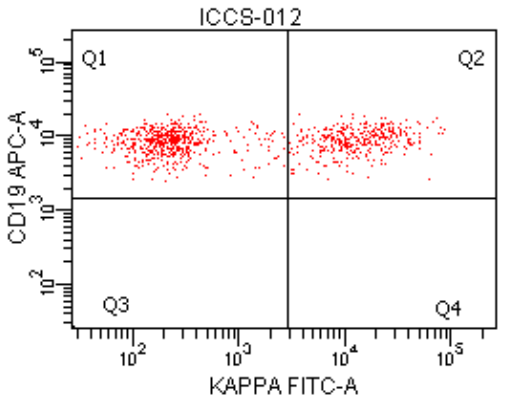
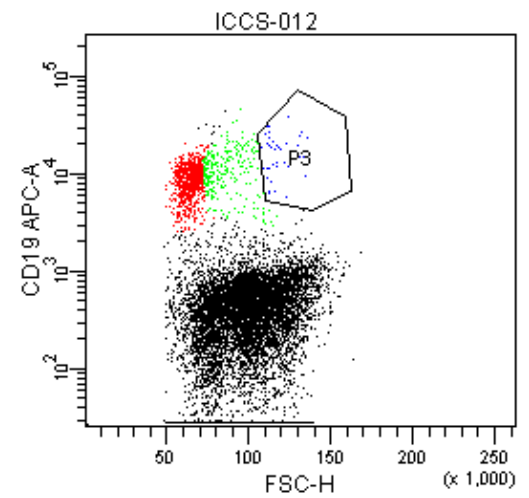
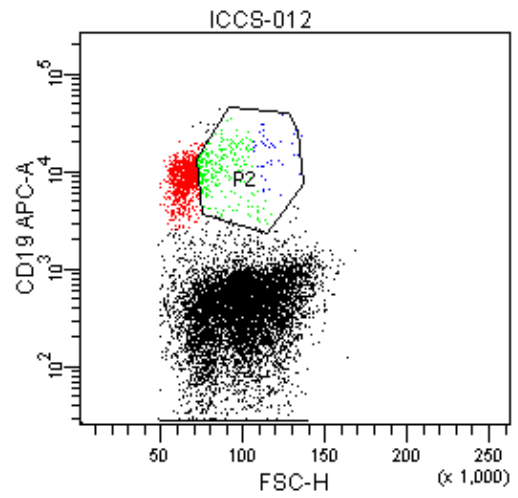
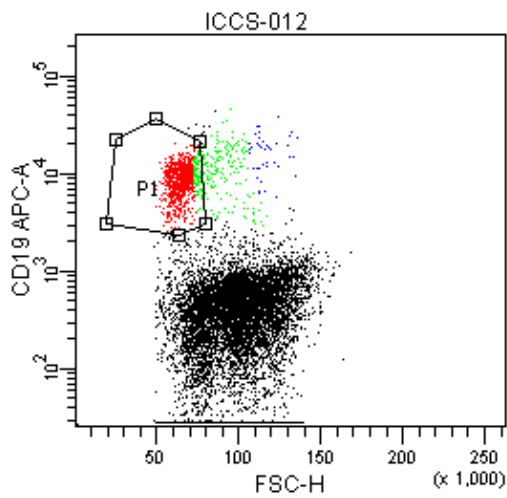
Population	%Pa...	%Total	LAM... Mean
■ P1	0.7	0.7	526
⊠ Q1	97.1	0.7	409
⊠ Q2	2.9	0.0	4,399

Experiment Name: ICCS  
 Specimen Name: ICCS  
 Tube Name: 013  
 Record Date: Jun 20, 2011 2...

Population	%Par...	%Total	LAM... Mean
■ P2	4.4	4.4	1,095
⊠ Q1-1	89.0	4.0	286
⊠ Q2-1	11.0	0.5	7,628

Experiment Name: ICCS  
 Specimen Name: ICCS  
 Tube Name: 013  
 Record Date: Jun 20, 2011 ...

Population	%Par...	%Total	LAM... Mean
■ P3	5.8	5.8	5,827
⊠ Q1-2	62.3	3.6	419
⊠ Q2-2	37.7	2.2	14,750



Experiment Name: ICCS  
 Specimen Name: ICCS  
 Tube Name: 012  
 Record Date: Jun 20, 20...

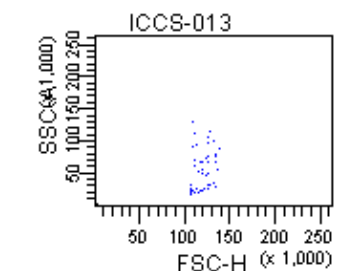
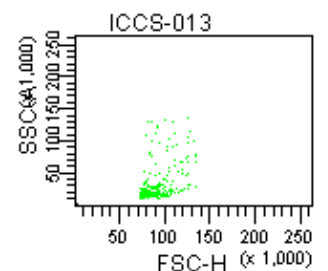
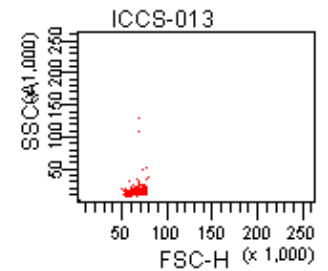
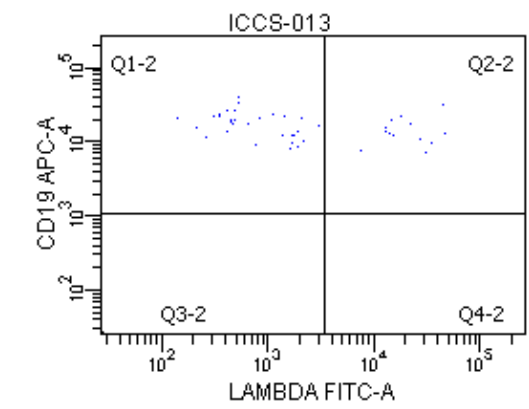
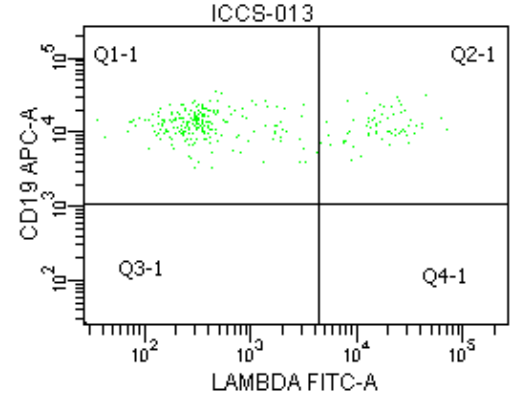
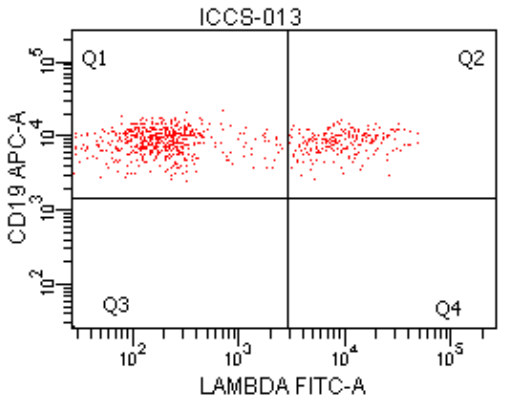
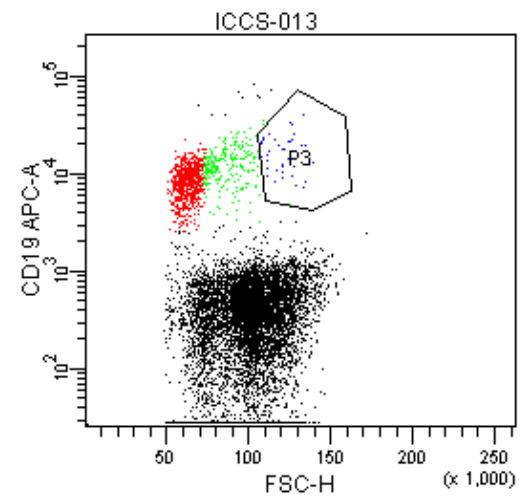
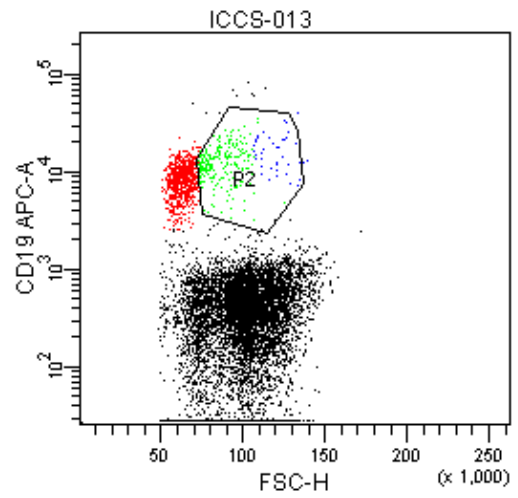
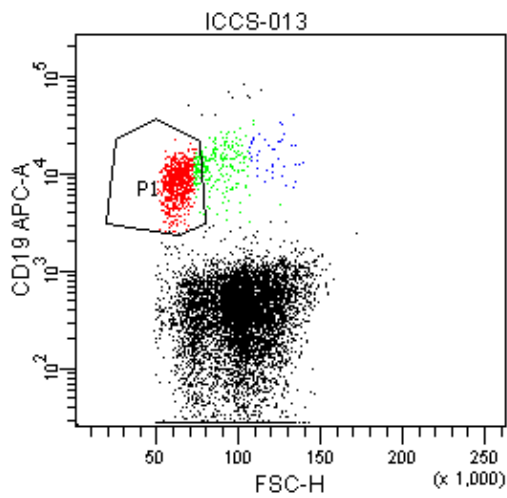
Population	%P...	%T...	Mean	CD...
P1	9.2	9.28	510	
Q1	60.2	5.58	284	
Q2	39.8	3.78	853	

Experiment Name: ICCS  
 Specimen Name: ICCS  
 Tube Name: 012  
 Record Date: Jun 20, 20...

Population	%P...	%T...	Mean	CD...
P2	3.1	3.1	12,...	
Q1-1	62.4	2.0	12,...	
Q2-1	37.6	1.2	10,...	

Experiment Name: ICCS  
 Specimen Name: ICCS  
 Tube Name: 012  
 Record Date: Jun 20, 20...

Population	%P...	%T...	Mean	CD...
P3	0.4	0.4	16,...	
Q1-2	69.0	0.3	19,...	
Q2-2	31.0	0.1	11,...	



Experiment Name: ICCS  
 Specimen Name: ICCS  
 Tube Name: 013  
 Record Date: Jun 20, 20...

Population	%P...	%T...	Mean	CD...
P1	8.2	8.28	472	
Q1	73.8	6.08	540	
Q2	26.2	2.18	281	

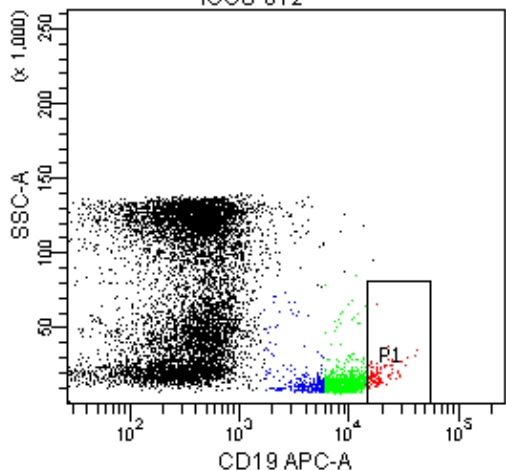
Experiment Name: ICCS  
 Specimen Name: ICCS  
 Tube Name: 013  
 Record Date: Jun 20, 20...

Population	%P...	%T...	Mean	CD...
P2	2.8	2.8	13,...	
Q1-1	77.3	2.2	13,...	
Q2-1	22.7	0.6	12,...	

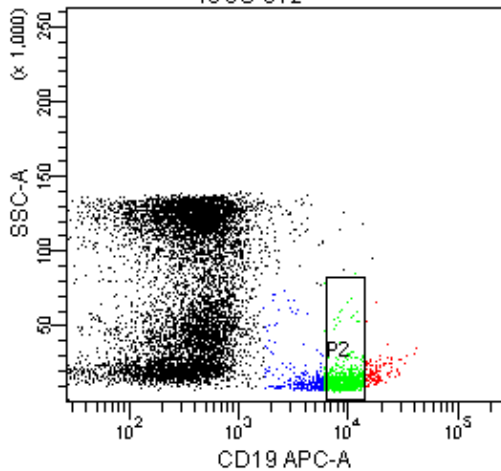
Experiment Name: ICCS  
 Specimen Name: ICCS  
 Tube Name: 013  
 Record Date: Jun 20, 20...

Population	%P...	%T...	Mean	CD...
P3	0.4	0.4	16,...	
Q1-2	69.8	0.3	17,...	
Q2-2	30.2	0.1	14,...	

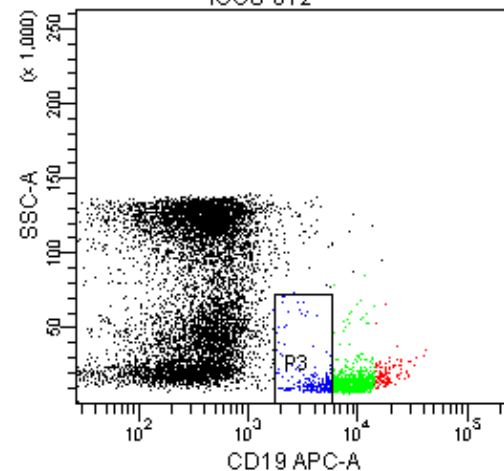
ICCS-012



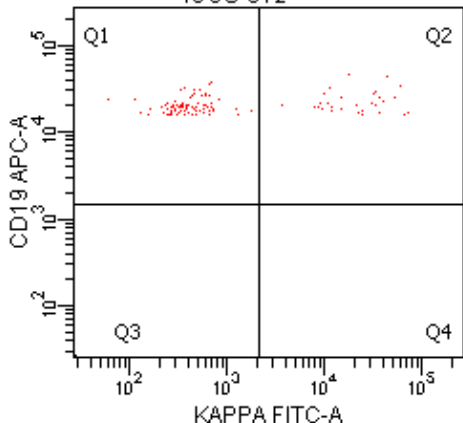
ICCS-012



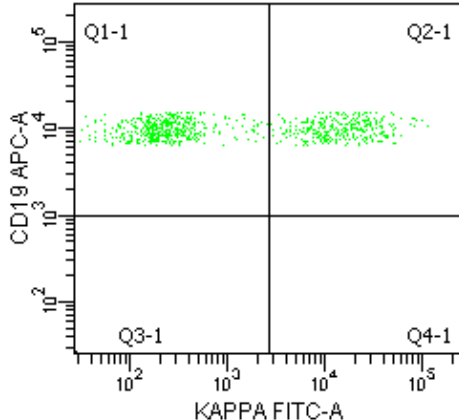
ICCS-012



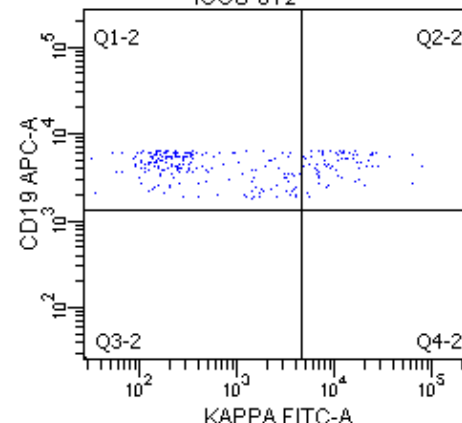
ICCS-012



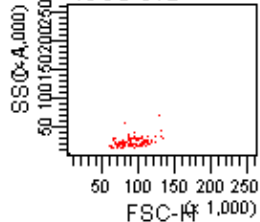
ICCS-012



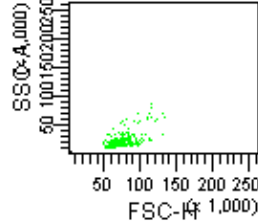
ICCS-012



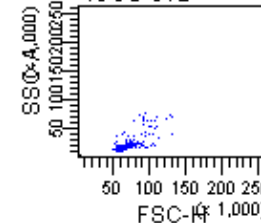
ICCS-012



ICCS-012



ICCS-012



Experiment Name: ICCS  
 Specimen Name: ICCS  
 Tube Name: 012  
 Record Date: Jun 20, 2011...

Population	%Pa...	%To...	Mean
■ P1	1.1	1.1	20,1...
☒ Q1	72.1	0.8	19,4...
☒ Q2	27.9	0.3	21,9...

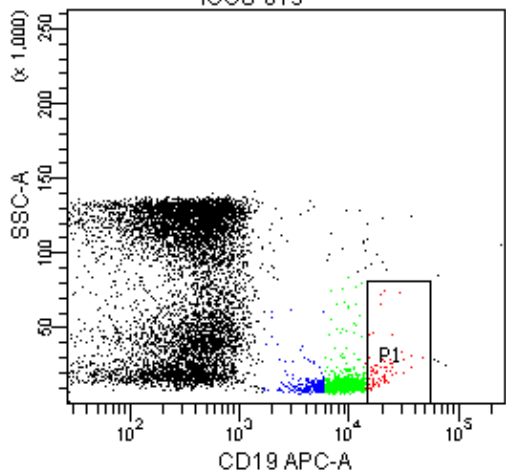
Experiment Name: ICCS  
 Specimen Name: ICCS  
 Tube Name: 012  
 Record Date: Jun 20, 2011...

Population	%Pa...	%To...	Mean
■ P2	8.0	8.0	9,51...
☒ Q1-1	58.2	4.7	9,47...
☒ Q2-1	41.8	3.4	9,57...

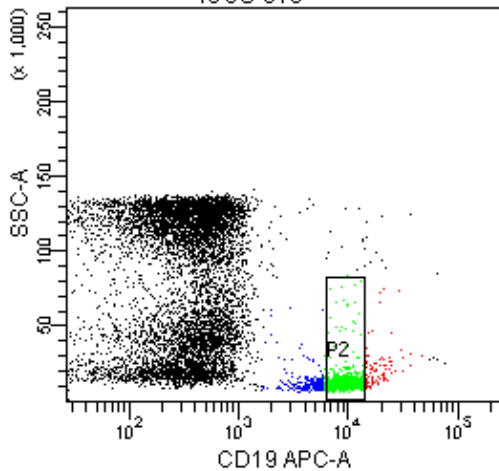
Experiment Name: ICCS  
 Specimen Name: ICCS  
 Tube Name: 012  
 Record Date: Jun 20, 2011...

Population	%Pa...	%To...	Mean
■ P3	2.6	2.6	4,260
☒ Q1-2	72.9	1.9	4,178
☒ Q2-2	27.1	0.7	4,481

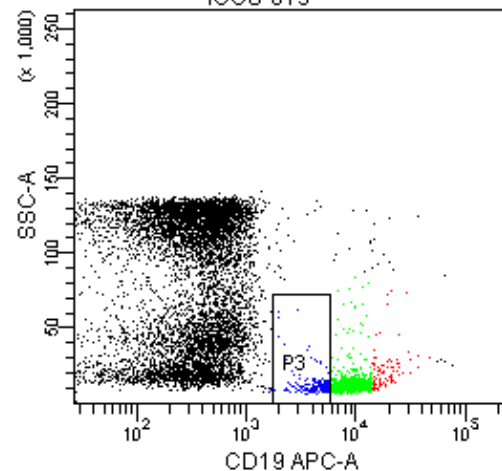
ICCS-013



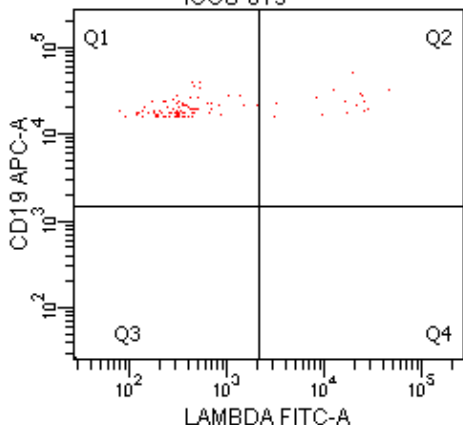
ICCS-013



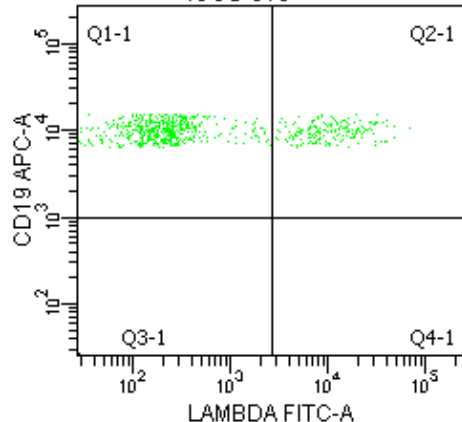
ICCS-013



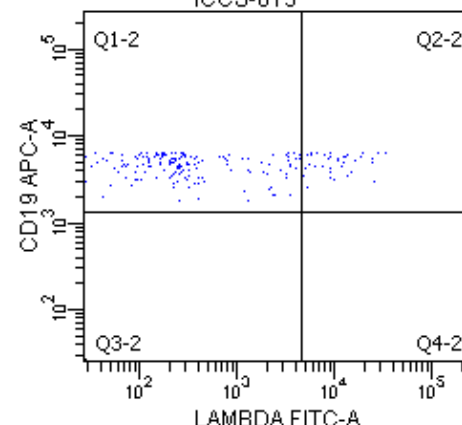
ICCS-013



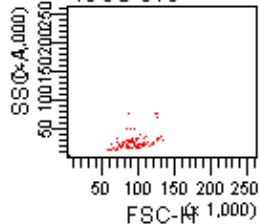
ICCS-013



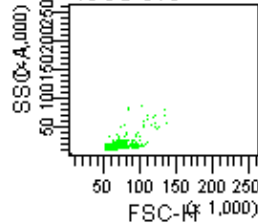
ICCS-013



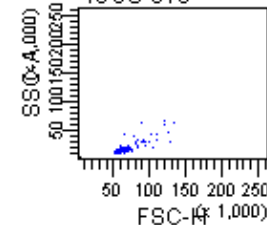
ICCS-013



ICCS-013



ICCS-013



Experiment Name: ICCS  
 Specimen Name: ICCS  
 Tube Name: 013  
 Record Date: Jun 20, 2011...

Population	%Pa...	%To...	Mean
P1	1.0	1.0	20,0...
Q1	83.7	0.8	19,2...
Q2	16.3	0.2	24,0...

Experiment Name: ICCS  
 Specimen Name: ICCS  
 Tube Name: 013  
 Record Date: Jun 20, 2011...

Population	%Pa...	%To...	Mean
P2	7.2	7.2	9,58...
Q1-1	74.4	5.4	9,65...
Q2-1	25.6	1.8	9,37...

Experiment Name: ICCS  
 Specimen Name: ICCS  
 Tube Name: 013  
 Record Date: Jun 20, 2011...

Population	%Pa...	%To...	Mean
P3	2.1	2.1	4,528
Q1-2	81.7	1.7	4,461
Q2-2	18.3	0.4	4,822